



2025 Adults

London | Birmingham | Leeds | Manchester | Dublin | Berlin | Paris
Malta | Dubai | Riyadh | Toronto | Brisbane | Online

Stay small, go global.

Welcome to EP

Here at EP, we offer a variety of destinations and courses that suit your life plans, whether you want to improve your English, German or French for fun, academic or work purposes. At EP, we don't just teach English, French and German; we prepare our students to be able to live, thrive and succeed in an international world.

EP Schools



Leeds Jan 2022
Birmingham Jan 2022
Dubai Sep 2021
London Canary Wharf Oct 2021
London Greenford Oct 2021
Malta Feb 2021
Manchester Jan 2022
Dublin Jun 2023
Toronto Jul 2023
Online May 2023
Paris Sept 2024
Riyadh Oct 2024
Berlin Oct 2024
Brisbane Oct 2024
Tampa 2025
Heidelberg Coming soon
Madrid Coming soon



We believe in everyone's right to an education and learning a language is often the first step. We want a world where everyone can communicate as equals through a common language. We deliver courses that stimulate and challenge students to learn, excel and grow. We want you to succeed no matter your level or career ambitions, and you will have the resources needed to succeed in your studies.

You can study in fantastic locations such as **London** (Canary Wharf & West London), **Manchester**, **Leeds**, **Birmingham** or outside the UK in **Dublin**, **Malta**, **Toronto**, **Dubai**, **Paris**, **Berlin**, **Brisbane** and soon others in other destinations too.

Contents

About EP	4
Why choose EP	5
Quality Assurance	6
What our students say	7
EPic Experience	9
Destinations	
London Canary Wharf 30+	10
London Greenford	12
Birmingham	14
Leeds	16
Manchester	18
Dublin	20
Berlin	22
Paris	24
Malta	26
Dubai	28
Toronto	30
Brisbane	32
Riyadh	34
Online	36
Courses	38
Course info	40
Pathway Programmes	42
GEDU Brands	43
EP Careers	44
Social Programme	47
Accommodation	48

About EP

Part of **gedu**
GLOBAL EDUCATION

Changing lives through education.

EP is a leading English, French, German language school and pathway provider.

Our mission is to change lives through education. We believe that everyone has the right to education and learning a language. That's why we offer a range of language courses to adults and young learners in a variety of amazing locations around the world.

follow us



@englishpathschools

Our courses are designed to help you achieve your English, French, German language goals and give you the experience of a lifetime. Whether you're looking to improve your general English skills, prepare for an exam or further studies, we have a course that's right for you.

In addition to our high-quality teaching, we also offer a wide range of support services to help you make the most of your time with us. These include:

- A variety of accommodation options to suit everyone.
- A comprehensive social programme with activities and events to help you meet new people and experience the local culture
- A dedicated student support team who are always on hand to help with any queries or problems



Our Values

Why choose EP?

- ✓ Many of our EP schools are based within **college-style campuses**
- ✓ Pre-arrival online induction; including **free English group lessons** to get you going before you arrive
- ✓ **Free Masterclass programme** to build professional & employability skills
- ✓ **Wide range of courses and EP Academic excellence**, including weekly review tests, skills tests, tutorials, progress reports and study clinics
- ✓ **Exclusive discount on your first EP Online booking** after completion of your on-campus course
- ✓ Many EP schools are in **prime city locations** such as down-town Toronto, Knowledge Village in Dubai or St Julian's in Malta
- ✓ Student Experience Managers give you a **personalised service** and an exceptional stay

Quality Assurance



At EP, we have checklists in place to ensure every student at EP is getting the best care available.

To ensure the highest standards EP is accredited by local governmental entities and are members of recognised international organisations:

This includes:

- ✓ First week surveys and focus groups
- ✓ Suggestion boxes
- ✓ Mid-course academic feedback sessions
- ✓ End-of-course surveys
- ✓ Quality Assurance Programme



What our students say



Renato Gois



It's my second time at English Path, Honestly it's an amazing and very professional school, teachers, directors, staff, the level is the best with learning English, I am speechless to thank you for your support in my growth as a professional. congratulations to all of you! thanks a lot!



Diana Alves



The staff at this place is fantastic, and the teachers are brilliant. Social events are very well selected, and the best part for me is that it's a super comfortable learning space, both physically and mentally. This place is super chill, and the folks here are awesome. It's situated in a great spot in Dun Laoghaire. Your day-to-day experience here goes beyond just English classes—it's like a full-on cultural exchange. I must highlight the outstanding support they gave us with test bookings and preparation, such as the TIE test. I had some frustrating experiences with my last school negligence, but they helped me to overcome them.



Vipudh Bovorn



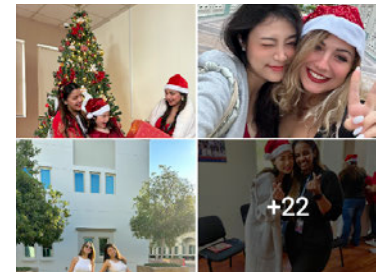
The best choice for studying abroad. All teachers, classmate, schoolmates, school social programs are absolutely amazing. I've gained lots of good experiences and friends right here in EP Dubai. As you can see lots of big smile from our faces, let's come can check it out!



Enrico Parlanti



English Path is a modern, well-organized school in a central area, surrounded by stores, restaurants and every kind of service. The best part about it though are the people: the staff is always helpful and ready to answer any question, the teachers care about the students and make them feel comfortable during their learning process and the activities organized by the school are always amazing! I definitely recommend the school!



Check out our students' testimonials



EPic Experience

Our vision is to change lives through education. We've planned each step carefully to offer you an EPic experience.

Discover the journey that awaits you from pre-arrival preparations to alumni engagement.



Pre-Arrival

- Familiarise yourself with the team through our online induction.
- Receive a complimentary gift of speaking classes at EP Online (subject to terms and conditions).
- Prepare for your upcoming adventure with our pre-arrival information packs.

Arrival

- Have fun and learn about our school and city during your induction.
- Meet our Student Ambassadors who will look after you during your course.
- Enjoy some local delicacies with our team.
- Allow our experts to place you in the most suitable class based on your abilities using our level tests.
- Receive a welcome bag containing some free goodies (including a SIM card in most of our schools).
- Explore the city with us during our orientation tour.



During your course



- Help us personalise your experience by completing our online suggestion form and watch us bring your experience to life.
- Apply to be a Student Ambassador and receive an EP Ambassador t-shirt, certificate and letter of recommendation from our team.
- Share moments of joy with our Happiness Officer.
- Win 'Student of the Moment' and be proudly displayed in our office with a photo of your class and a message written by your teacher.
- Celebrate your birthday with us and let us treat you.
- Get discounts on a variety of services at our neighbourhood friends.
- Collect EPic currency to buy EP merchandise and treats from our neighbourhood friends.
- Change your school experience by switching EP centres during your program. If the new school costs more, pay the difference; if it's cheaper, use the credit to extend or upgrade your tuition or apply it toward accommodation.



End-of-course

- Receive a well-deserved farewell and your certificate during our leavers' ceremonies.
- Have your EP picture taken to become a part of our wall of fame.
- Make your mark and leave a message in our visitor book.
- Receive your voucher for exclusive discounts for EP online.
- Create a future study goals plan and stay committed to your learning.

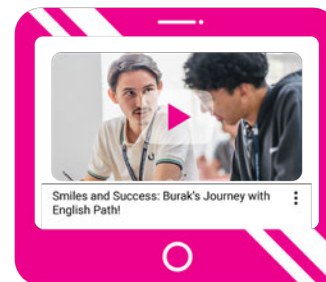


Alumni

Enrol at any of our academic centres worldwide as many times as you wish, without having to re pay a registration fee.

We are actively working on bringing you the following enriching experiences soon.

- Keep up to date with EP and view your pictures on EPicBook.
- Join our LinkedIn and Facebook online communities.
- Celebrate with our regional representatives at your country's EP annual reunion.
- Be a star of our social media with a 'Where are you now?' video and we'll tag you in the post.
- Inspire EP students of the future by coming back to be a guest speaker.





EP Canary Wharf 30+

London

Our Canary Wharf campus is a stunning facility in East London, situated near two of the world's major financial hubs - Canary Wharf and the City of London. With state of the art facilities, fantastic views and a great selection of places to eat, you will experience London at its best.

Did you know: Canary Wharf itself takes its name from the sea trade with the Canary Islands, whose name originates from the Latin 'canis' (dogs)!



Find us on Google maps








Import Building,
2 Clove Crescent,
E14 2BE

Features and facilities

- Courses for 30+
- Capacity 100 students
- Student study areas
- Communal space
- Student Services office
- Restaurants
- Rooftop lounge area

Key facts

-  Modern infrastructure
-  Between Jubilee and Elizabeth tube lines
-  30+ Campus
-  London Zone 2
-  Many leisure activities

Choose your course

- **General English**
 - > Classic (AM/PM)
 - > Semi-Intensive (AM/PM)
 - > Super-Intensive
- **IELTS Preparation**
- **Paid Hospitality Internship Programme**
- **One-to-one English**

Choose your accommodation

- **Homestay**
 - **Student Residence**
- Distance up to 60 mins travel time.



EP Greenford

London

Few cities in the world blend strong connections to their history with a love for new development like London. The millions of annual visitors to London always have something new to experience with many museums, famous landmarks, historical buildings, restaurants and a unique feel from one area of the capital to another. Our campus is a fantastic modern building with 100.000 sq ft of space, including a library, cafe, and a lot of space for students.



Find us on Google maps



891 Greenford Road,
Greenford, London,
UK, UB6 0HE

Features and facilities

- Courses for 16+
- Capacity 500 students
- Student study areas
- Communal space
- Student Services office
- Starbucks Café
- Library
- IT lab

Key facts



Close to the Iconic Wembley Stadium.



Free minibus service to from school to the underground station



Safe & friendly neighbourhood.



Shuttle service to the tube station.



The global headquarters of EP

Choose your course

- **General English**
 - Classic AM
 - Semi-Intensive AM

- **IELTS Preparation**
- **Paid Hospitality Internship Programme**

Choose your accommodation

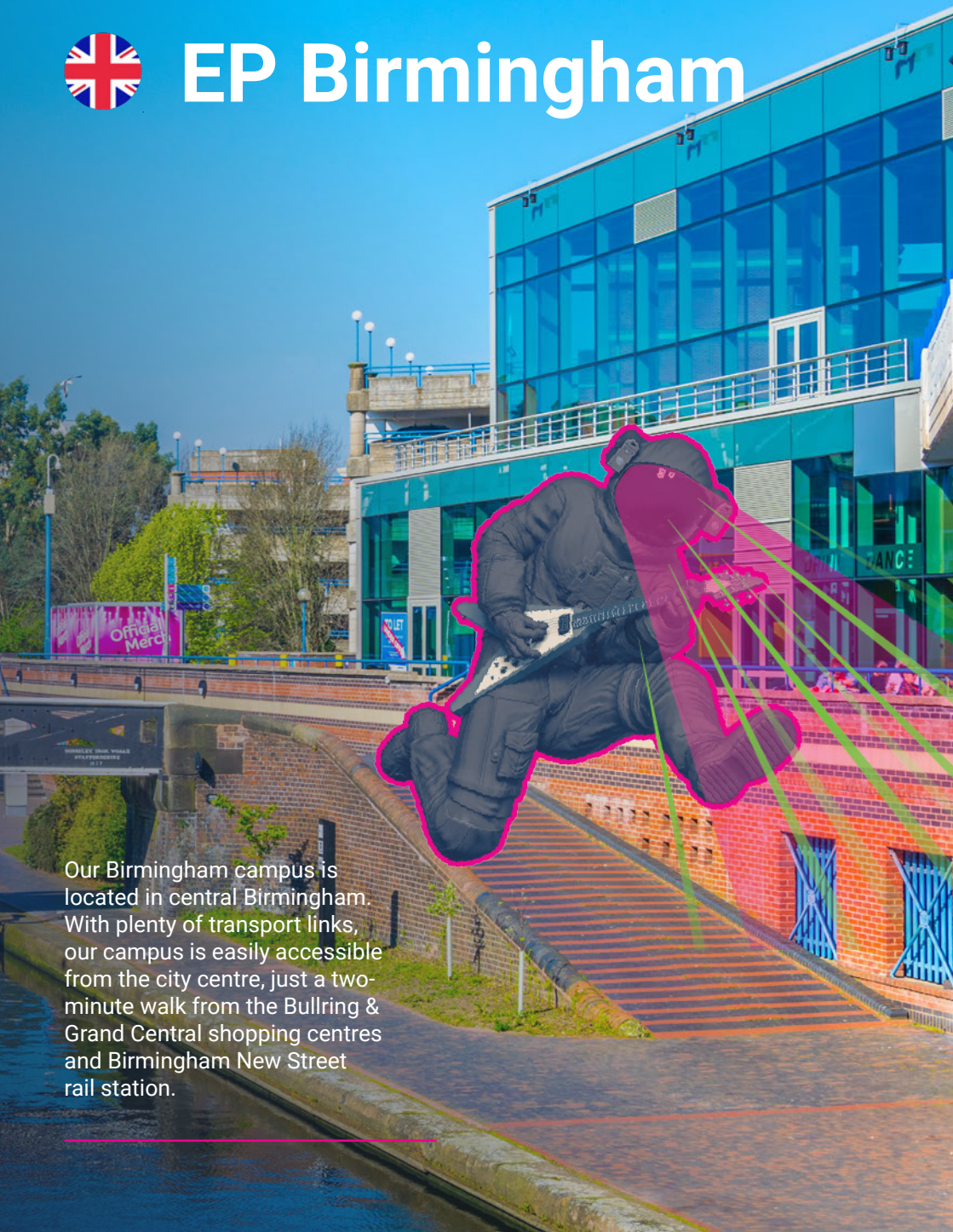
- **Homestay 18+**
- **Student Residence 18+**

Distance up to 60 mins travel time.





EP Birmingham



Our Birmingham campus is located in central Birmingham. With plenty of transport links, our campus is easily accessible from the city centre, just a two-minute walk from the Bullring & Grand Central shopping centres and Birmingham New Street rail station.



Find us on Google maps



Norfolk House 84-86
Smallbrook, Queensway
Birmingham, B5 4EG

Features and facilities

- Courses 16+
- Capacity 500 students
- Library & self-study area
- Communal space
- Student Services office
- Student kitchen
- IT lab

Key facts

- UK's youngest population
- Central location
- UK's biggest library
- UK's jewellery capital.
- UK's biggest Christmas market.

Choose your course

- **General English**
 - > Classic (AM/PM)
 - > Semi-Intensive (AM/PM)
 - > Super-Intensive

- **IELTS Preparation**
- **Paid Hospitality Internship Programme**
- **Volunteering Programme**
- **One-to-one English**

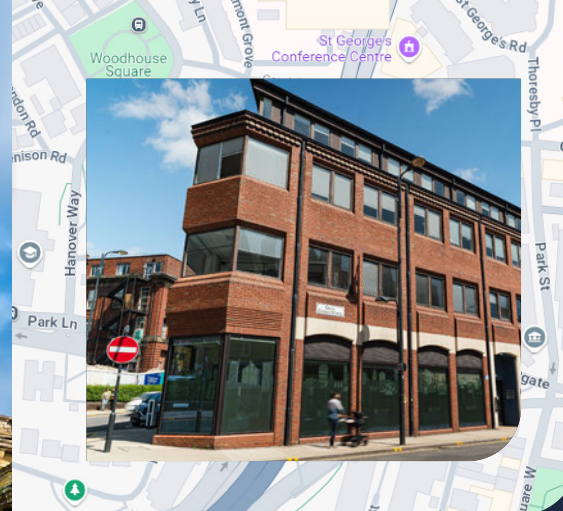
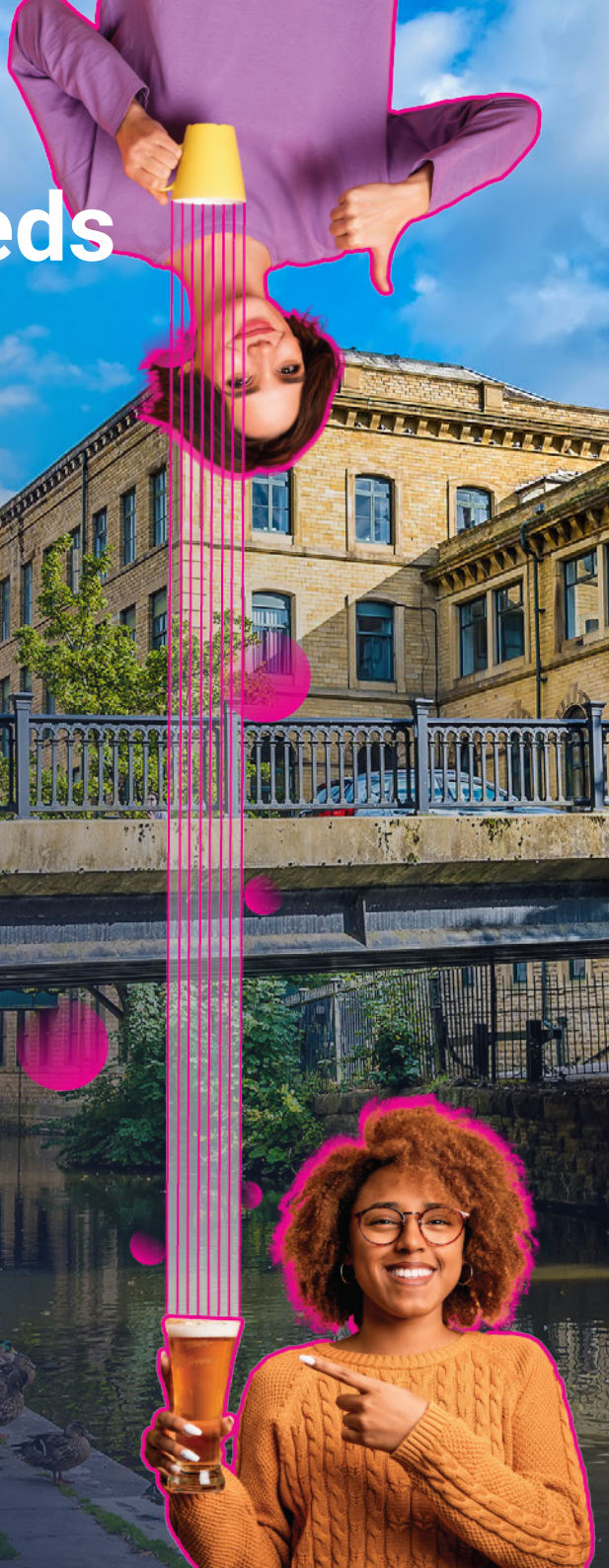
Choose your accommodation

- **Homestay 16+**
 - **Student Residence 18+**
- Distance up to 60 mins travel time.



EP Leeds

Leeds, Yorkshire's largest city and the eighth largest in the UK is a regional hub for finance, culture, and business, bursting with life and cultural energy. The city boasts a vibrant community with dance companies and an award-winning national theatre. Its independent food scene is increasingly popular, attracting visitors from across the UK. Our school is located in the heart of the city, between the City Council and Town Hall buildings. On weekends, we enjoy trips to York, the Lake District, Liverpool, and more.



Find us on Google maps



St George House,
40 Great George St,
Leeds LS1 3DL

Features and facilities

- Courses 16+
- Capacity 250 students
- Self-study area
- Reception
- Student Services office
- Library
- IT lab

Key facts

- University City
- 2 hrs from London, 3hrs to Edinburgh
- Friendly & safe
- Many green areas & parks
- Biggest city in Yorkshire
- Active nightlife

Choose your course

- **General English**
 - > Classic AM
 - > Semi-Intensive AM

- **IELTS Preparation**
- **Paid Hospitality Internship Programme**
- **Volunteering Programme**
- **One-to-one English**

Choose your accommodation

- **Homestay 16+**
 - **Student Residence 18+**
- Distance up to 60 mins travel time.



EP Manchester

Our Manchester campus is just 15 minutes from the city centre, near attractions like the Central Retail District, Manchester Art Gallery, and O2 Apollo arena. Sports fans can enjoy Old Trafford and Etihad Stadium, both less than an hour away. You'll receive excellent support for your studies and have plenty to explore nearby.



Find us on Google maps



Universal Square,
Devonshire St. North,
Manchester, M12 6JH

Features and facilities

- Courses 18+
- Capacity 200 students
- Library & self-study area
- Reception
- Student Services office
- Student Canteen & Café
- IT lab

Key facts

- Famous for football
- Oldest library in the UK
- Home of Oasis, The Smiths, Chemical Brothers
- More than 300 restaurants in the city centre.
- 500+ bars and pubs

Choose your course

- **General English**
 - Classic AM
 - Semi-Intensive AM

- **IELTS Preparation**
- **Paid Hospitality Internship Programme**
- **Volunteering Programme**
- **One-to-one English**

Choose your accommodation

- **Homestay 18+**
 - **Student Residence 18+**
- Distance up to 60 mins travel time.



EP Dublin

Our Dublin campus, set in a historic Grade 1 listed building, offers an inspiring environment for learning English in a city rich with literary heritage. Surrounded by a vibrant seaside community and close to job opportunities, it's an ideal spot for both study and living.



Find us on Google maps



1 Clarinda Park N, Dún Laoghaire, Dublin, A96 H5X6, Ireland

Features and facilities

- Courses 16+
- Capacity 220 students
- Grade 1 listed building
- Student lounge
- Student Services office
- Garden
- IELTS/TIE Preparation

Key facts



Home to famous writers & poets



Seaside location



The IT hub of Europe, home to Google, Meta and many more!



EU tech hub

Choose your course

- **General English**
 - Classic (AM, PM)
 - Semi Intensive (AM, PM)
- **Work & Study programme**
- **Work Experience (EU/EEA passport holders only)**
- **One-to-one English**

Choose your accommodation

- **Homestay 16+**
- **Student Residence 18+**
- **Hotel 18+**

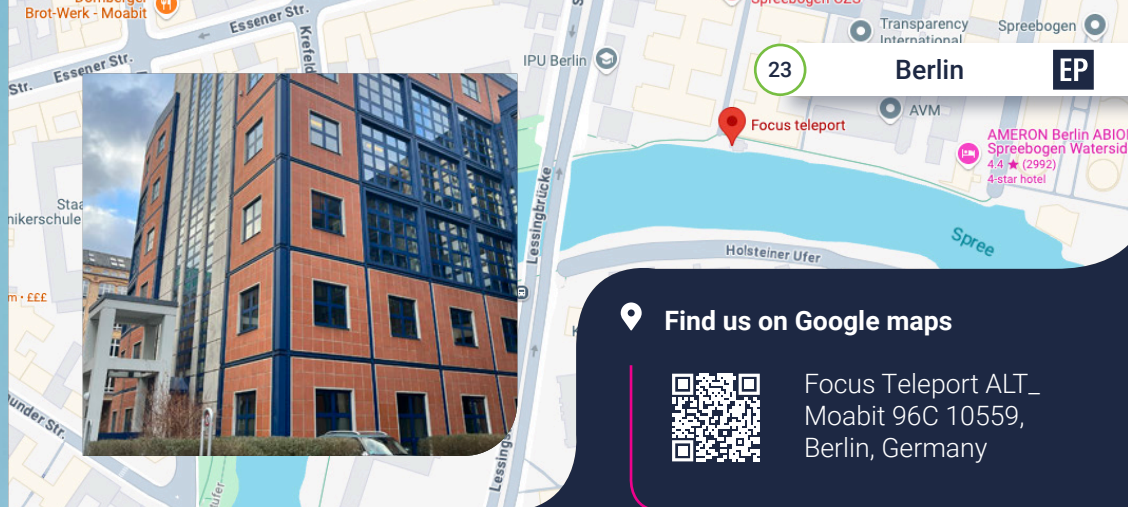
Distance up to 60 mins travel time.



EP

Berlin

Our Berlin campus is close to landmarks like the Brandenburg Gate and Museum Island. The city's excellent public transport makes it easy to explore its rich history, diverse neighborhoods, and vibrant arts scene. Benefit from strong academic support while enjoying Berlin's many attractions.



Find us on Google maps



Focus Teleport ALT_
Moabit 96C 10559,
Berlin, Germany

Features and facilities

- Courses 16+
- Capacity 250
- English & German courses
- Student lounge
- Self-study area
- Computer Lab
- Shops a restaurants close by

Key facts



170+ museums, 300+ galleries, and 150+ theatres



The city has a rich history



One of the greenest cities in Europe, with numerous parks, forests, and waterways



Diverse and cosmopolitan atmosphere

Choose your course

- **General German**
 - > Classic AM
 - > Semi-Intensive AM
 - > Premium 30
- **General English**
 - > Classic PM
 - > Semi-Intensive PM
 - > Premium 30
- **German and English for Academic Purposes**
- **Studienkolleg Preparation**
- **Pre-Masters**
- **International Foundation Year**
- **Work Experience (EU/EEA passport holders only)**
- **One-to-one:** German or English

Choose your accommodation

- **Hostel 18+**
 - **Homestay 18+**
- Distance up to 60 mins travel time.



EP Paris

Our Paris school is located in a safe, central area with easy access to subway and bus stations. The campus features modern facilities and top-notch equipment, enhancing your learning experience. We offer diverse courses supported by our experienced team, ensuring a high-quality educational journey.



Find us on Google maps



98 Rue Didot,
75014 Paris,
France

Features and facilities

- Courses 16+
- Capacity 100 students
- Reception
- Student lounge
- Student Services office
- Self-study area
- Library

Key facts



One of the first cities in the world to have street lighting.



9,000+ cafés in the city.



400+ parks and gardens, making it one of the greenest cities in Europe.



Home to the world's smallest bookstore.

Choose your course

- **General German**
 - > Classic AM
 - > Semi-Intensive AM
- **General English**
 - > Classic PM
 - > Semi-Intensive PM
- **One-to-one:** French or English
- **Pathway programme**
 - > English for Academic Purposes
 - > Pre-Masters
 - > International Foundation Year

Choose your accommodation

- **Residence 18+**
- **Hostel 18+**
- **Homestay 16+**

Distance up to 60 mins travel time.





EP Malta

English Path Malta is located in St Julian's, a scenic coastal town with views of Spinola Bay and Spinola Palace. The school is close to beaches, restaurants, and shopping, and minutes from a bus stop. Enjoy our social programme, including weekend trips to Valletta, Gozo, Comino, and the Blue Lagoon.



Find us on Google maps







West Block Marguerite
Mangion St, St. Julian's
Malta. STJ 3180

Features and facilities

- Courses 16+
- Capacity 600 students
- Reception
- Student lounge
- Student Services office
- Self-study area
- Library

Key facts

-  Perfect for exploring Europe
-  Close to many beautiful beaches
-  Game of Thrones was filmed here
-  Europe's fastest growing economy

Choose your course

- **General English**
 - > Classic (AM/PM/Evening)
 - > Semi-Intensive (AM/PM)
 - > Super-Intensive
- **One-to-one English**
- **Business English**
- **Professional Certificates**
- **Work Experience (EU/EEA passport holders only)**

Choose your accommodation

- **Shared apartments 18+**
- **Residence 16+**
- **Hotel 18+**

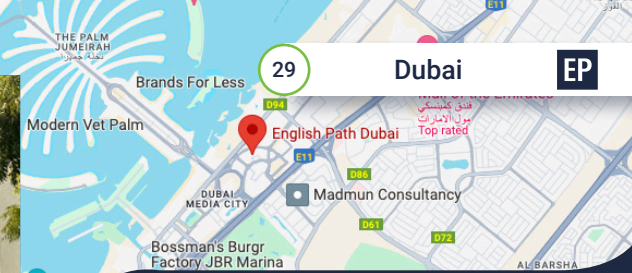
Distance up to 60 mins travel time.





EP Dubai

Dubai, the largest city in the UAE, features a rapidly growing economy and iconic attractions like the Burj Khalifa. Our school, located in Knowledge Park, is in a lively student area. Students can enjoy a social programme with activities like desert safaris and Abu Dhabi city tours to anything else you can think of, Dubai has it all!



Find us on Google maps



English Path Block 5, Dubai Knowledge Park, Dubai

Features and facilities

- Courses 16+
- Capacity 500 students
- Reception
- Food court
- Student Services office
- Self-study area
- Library

Key facts

- 📍 World education hub
- 🏛️ Famous landmarks
- 💰 Business opportunities
- 🛍️ Biggest Mall in the world
- 🏢 Modern infrastructure

Choose your course

- **General English**
 - > Classic (AM, Brunch, Evening)
 - > Light (PM, Evening)
 - > Super-Intensive

- **One-to-one English**
- **Professional Certificates**
- **Business English**
- **IELTS Preparation**

Choose your accommodation

- **Student Residence 18+**
- **Shared Apartments 16+**
- **Hotel 16+**

Distance up to 60 mins travel time.





EP Toronto

Toronto, Canada's largest city, is celebrated for its multicultural vibe and vibrant cultural scene. The school is located in a stunning downtown landmark, placing students near museums, galleries, festivals, and more. Enjoy our social program with weekend trips to Niagara Falls, French Canada, New York, and other exciting spots.



Find us on Google maps



36 Victoria St,
Toronto, ON M5C
1H3, Canada

Features and facilities

- Courses 16+
- Capacity 350 students
- Reception
- Student lounge & kitchen
- Student Services office
- Self-study area
- Library

Key facts

- 📍 Largest city in Canada
- 🛍️ PATH largest underground shopping complex
- 💰 Finance capital
- 🗼️ Iconic CN Tower
- 🏠 Home of TIFF
- 🌳 10 million trees in the city

Choose your course

- **General English**
 - Classic (AM/PM),
 - Semi-Intensive (AM/PM)
 - Super-Intensive
- **One-to-one English**
- **Business English**
- **IELTS preparation**
- **Professional Certificates**
- **English for Academic Purposes**
- **High School Preparation**

Choose your accommodation

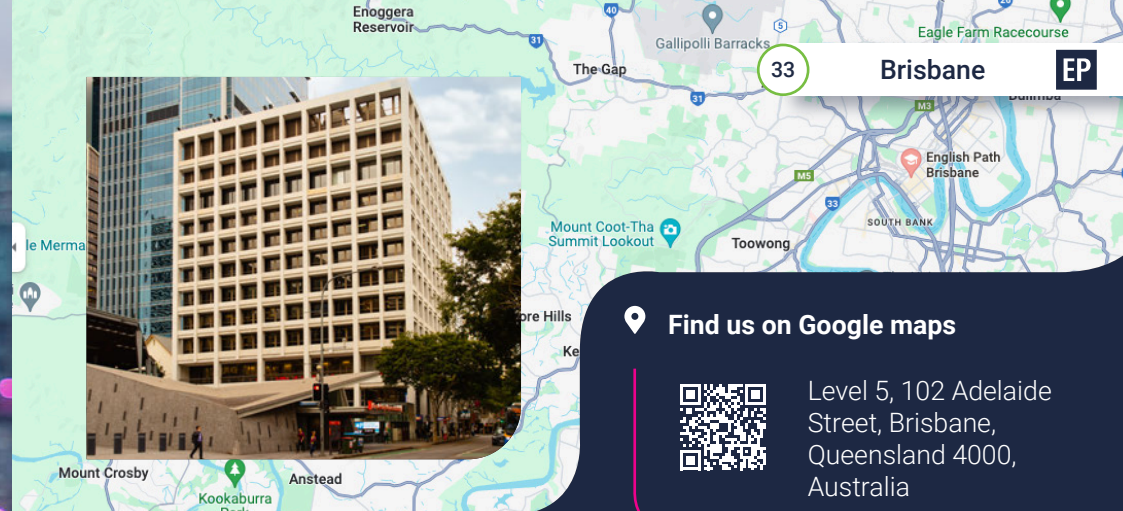
- **Homestay 16+**
- **Student Residence 18+**
Distance up to 60 mins travel time.





EP Brisbane

Located in central Brisbane, Queensland, our school provides a modern learning environment with easy access to city amenities and public transport. Students benefit from a rich indigenous heritage and a vibrant, multicultural setting, offering both cultural and professional opportunities.



Find us on Google maps



Level 5, 102 Adelaide Street, Brisbane, Queensland 4000, Australia

Features and facilities

- Courses for 16+
- Capacity 100 students
- Student lounge (self-study area)
- Library
- Break-out area with kitchen
- Reception with Student Services staff

Key facts

-  Magnificent climate
-  Outdoor lifestyle
-  Vibrant cultural scene
-  Friendly and welcoming atmosphere
-  Home of the 2032 Summer Olympics!

Choose your course

- **General English**
 - > Classic (AM/PM)
 - > Semi-Intensive (AM/PM)
 - > Super-Intensive

Choose your accommodation

- **Homestay 16+**
 - **Student Residence 18+**
- Distance up to 60 mins travel time.





EP Riyadh

Our Saudi Arabian campus offers a unique travel experience with its rich Islamic heritage, highlighted by the holy cities of Mecca and Medina. Beyond its spiritual significance, the country features dramatic landscapes, from vast deserts to bustling modern cities like Riyadh and Jeddah. With ongoing reforms under Vision 2030, Saudi Arabia is evolving as a dynamic destination that blends tradition with modern attractions.



Features and facilities

- Age range from 6+
- Capacity 250 students
- Student study areas
- Communal space
- Student Services office
- Restaurants
- Lounge area
- Parking

Key facts

-  Experienced and qualified teachers
-  The first British owned and run language school in Riyadh
-  British English and curriculum
-  Courses to suit all ages
-  Flexible course times

Choose your course

For local residents only

- General English
- English Plus
- IELTS Exam Preparation
- English Intensive
- After School Club
- Hobby English for Mums
- Weekend Kids Club



 Find us on Google maps



Granada Square, First Floor,
Granada Area, Alshuhada
district, Abi Jafar Al Mansour
Street, Riyadh



EP Online

EP Online is a learning hub for personalised live English language courses. The platform is led by experienced teachers and provides access to courses, assignments, and learning materials in one place – taking the hassle out of learning for students.

The use of AI, language technology, adaptive tools and interactive exercises gives students a seamless learning experience. With an inclusive and affordable approach, students from diverse backgrounds have the chance to benefit from practical communication skill development, live interactions, and instant feedback. The structured curriculum includes immersive experiences like conversation clubs, debates, and role-plays.

Upon course completion, students receive EP Online certificates. EP Online aims to help

students find their true potential in English language through a rewarding learning experience, with reasonably priced courses catering to learners from diverse backgrounds.

Find out more



Features and facilities

- Experienced and qualified Teachers
- Structured curriculum with immersive experiences
- Comprehensive Learning Management System
- Multimedia virtual classroom
- E-commerce tools to ease the process of booking online courses.
- AI and language technology.
- Self-study courses for personalized learning and exploration.
- Engaging global community
- Dedicated support team for assistance throughout the learning journey.

Choose your course

Course	Time*	*subject to change
General English – Full-Time	18 hours per week, 5 days a week (Mon - Fri)	
General English – Part-Time	5 hours per week, 5 days a week (Mon - Fri)	
IELTS General	8 hours per week, 4 days a week (Mon - Thur)	
IELTS Academic	12 hours per week, 4 days a week (Mon - Thur)	
Live IELTS 6.5 Ready	10 hours per week, 5 days a week (Mon - Fri)	
IELTS Foundations	2 hours per week, 2 days per week (Sat & Sun)	
1-2-1 (Available for all courses above)	Scheduled upon the student's availability.	

Timeslots are: 12pm, 6pm and 12am, all timing in respect of the UK time zone. We have identified these after careful deliberation to try and accommodate all time zones.

Students are being classed based on their level of English, which is assessed when students take the placement test.



Courses

We have a great selection of English, French, German courses to suit your needs and requirements and we are sure we have the right course for you. We will support you every step of the way, from enquiry to end of course and beyond! Before or after your face-to-face course, you can study with EP Online.

✓ Academic benefits

- Weekly unit test (Friday)
- Study Tips
- Monthly skill tests (twice per cycle)
- Monthly course tutorials (twice per cycle)
- Study clinics (one-to-one expert support)
- Support is provided for students to book Cambridge & IELTS exams
- Masterclasses about a wide range of topics from personal branding to job interview skills



EP courses

English, French, German courses

- **Classic morning, brunch, afternoon, light or evening**
 - > 15 hours / 20 lessons per week (Monday - Friday)
 - > 11.25 hours / 15 lessons per week (Dubai only) (Monday - Friday)
- **Semi-intensive morning or afternoon**
 - > UK morning 22 lessons / 27 hours per week (Monday - Friday)
 - > UK afternoon 25 lessons / 20 hours per week (Monday - Friday)
 - > All other destinations for our Semi-intensive programme 30 lessons / 20 hours per week (Monday - Friday) a combination of General English Classic + with a wide range of electives*
- **Super-intensive (All destinations) (Classic Morning + Classic Afternoon)**
 - > 30 hours / 40 lessons per week (Monday - Friday)
- **Super-intensive (Dubai only) (Classic Morning + Classic Brunch)**
 - > 30 hours / 40 lessons per week (Monday - Friday)

Find out more about our Electives on page 30.

Certified Digital Marketing Professional

Business Management and Leadership

Exam Preparation

English for Business

English plus International Diploma in Business

Internship & Volunteering Programmes

Work Experience (EU/EEA passport holders only)

English Path Online

Bespoke Adult Groups Programmes

- 50+
- English for Teachers
- English for Hospitality professionals
- English for Banking
- English for IT
- English for Mining
- English for Flight Crew
- And more...

You tell us what, when and where (even online) and we'll set it up for you. Ask us for a quote: info@englishpath.com

Electives

EP offers a variety of elective courses that allow students to explore their interests and develop their skills. These courses are taught by experienced and qualified teachers, and they are a great way to supplement your general English, French, German studies.

Electives depending on your level of language, the EP campus and current availability: Speaking, Listening, Reading, Writing, Pronunciation, Idioms and Phrasal verbs, Grammar, Vocabulary, Everyday English, Debate and Public Speaking, Business English, English for Hospitality, Digital Marketing, Personal Branding, IELTS Preparation, Academic Skills, Employability Skills.

- NB. Topics may depend on current availability and demand
- Mixed levels within classes
- Each topic runs for 4 weeks



For more specific details on our course please consult our website and pricelist online.

EP also offers English, French, Spanish courses and life experiences Year-round and in Spring, Summer and Winter to young learners aged 8 to 17 years old.

For information on our Young Learner offering please consult our Young Learner brochure.





? Course info

Do I need a specific level to join a course?

for general English course you normally do not require a specific level of English before you start. For other courses you may need a higher level of English. For other entry requirements please consult our pricelist online.

What is the minimum course duration?

1 week

What is the maximum course duration?

Depends on the course you choose. For maximum course duration please consult our pricelist online.

When can I start?

General English courses mostly start every Monday. For other course start date information and entry requirements please consult our pricelist online.

What is the minimum age?

If you enrol on an adult English course you should at least be 16 years old. Depending on the destination and campus you may need to be older to be able to enrol. For more specific details on course ages please consult our pricelist online.

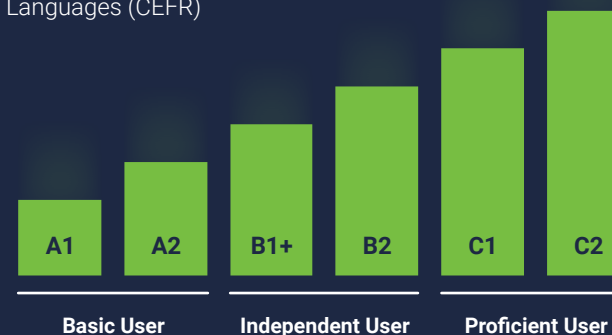
Check your English level



Try our free English test online

CEFR Progression Table

Levels of English, French, German - The European Framework of Reference for Languages (CEFR)



EP Progression table

			General English	One to One	English for Business	IELTS Preparation	Business Certificates	Diploma in Business	English for Finance	Cambridge Exam Prep
Beginner		A1								
Elementary		A1	Can understand some words and very basic expressions.	✓	✓					
Pre - Intermediate	IELTS 2.5 - 3.5 TOEFL 40 - 49	B1	Can manage basic phrases and expressions.	✓	✓					
Intermediate	IELTS 4 - 5 TOEFL 50 - 64	B1+	Can speak more freely but still limited in grammar and vocabulary.	✓	✓	✓	✓	✓	✓	
Upper Intermediate	IELTS 5.5 - 6.5 TOEFL 65 - 79	B2	Can grasp everyday phrases and expressions with better grammar and vocabulary.	✓	✓	✓	✓	✓	✓	✓
Advanced	IELTS 6.5 - 7.5 TOEFL 80 - 99	C1	Is comfortable in managing complex texts and speaking in different settings.	✓	✓	✓	✓	✓	✓	✓
Proficient	IELTS 8.5 - 9.0 TOEFL 100 - 120	C2	Is fully competent, fluent and sophisticated as an English speaker.	✓	✓	✓	✓	✓	✓	✓



Pathway Programmes

English and German for Academic Purposes (EAP/GAP)

The English (EAP) and German (GAP) for Academic Purposes courses are designed to strengthen language and academic skills essential for college and university applications.

The courses emphasise improving both general and academic language, along with writing, research, and presentation skills to prepare students for higher education.

Students who successfully complete the course will meet the English and German language requirements for undergraduate admissions at our partner institutions.

School	EP Toronto (EAP), EP Paris (EAP), EP Berlin (EAP/GAP), EP Online (EAP)
Start date	First Monday of every month
Duration	10 weeks
Hours per week	30 hours
Minimum English Language Level	Completion of EP Level B2 or equivalent
Minimum Age Requirement	16

Pre-Master's

The Pre-Master's Programme is designed to enhance language and academic skills needed for postgraduate university applications.

It focuses on improving general and academic language, communication, writing, study techniques, presentation skills, and research methods, all essential for success in postgraduate studies.

Students who successfully complete the course will meet the English language requirements for postgraduate admissions at our partner institutions.

School	EP Paris, EP Berlin
Start date	January 2025 September 2025
Duration	30 weeks
Hours per week	30 hours
Minimum English Language Level	Completion of EP Level B1 or equivalent
Academic entry requirements	Completion of an undergraduate degree*

*Each application will be assessed individually to determine if the prospective student meets the partner institutions' admissions criteria, other than English language requirement, for postgraduate studies.

International Foundation Year (IFY)

The International Foundation Year (IFY) is designed to help students develop their English language and academic skills while taking courses aligned with their chosen degree.

Upon successful completion of the IFY, students will automatically progress to degree-seeking status at our partner institutions.

School	EP Schools/Partner Institution
Course Name	International Foundation Year
Start date	January 2025 September 2025
Duration	30 weeks
Hours per week	20 hours
Minimum English Language Level	Completion of EP Level A2 or equivalent
Academic entry requirements	Completion of 12 years of high school or equivalent



Student Support:

Students receive personalised attention, teaching, and learning with qualified, experienced teachers offering nurturing support and expert advice. Personal tutorials are available for students as well as counselling on careers, pathway options, and assistance with applying to higher education.

Our Partner Institutions:





Studienkolleg Preparation

Studienkolleg Preparation course is designed to prepare students for the entrance test of Studienkolleg by focusing on mathematics in German and practising mock tests.

Studienkollegs are institutions offering foundation year courses to prepare students for their studies at a German university and students need to pass a final exam, Feststellungsprüfung (FSP), at the end of their studies to advance into their desired programmes.

School	EP Berlin
Start date	March 3, June 2, October 27, 2025
Duration	4 weeks
Hours per week	15 hours
Minimum English Language Level	Completion of EP Level B2 or equivalent
Minimum Age Requirement	16

High School Preparation

Pre-High School course enhances language and academic skills of students for a successful transition into high school in Canada.

The course not only focuses on improving language skills but also provides a cultural immersion into students' new environment.

Students who successfully complete the course, will meet the English language requirement of the admissions criteria for high school studies at our partner institutions.

School	EP Toronto
Start date	First Monday of July
Duration	8 weeks
Hours per week	15 hours
Minimum English Language Level	Elementary-Upper Intermediate
Minimum Age Requirement	13

EP is part of GEDU



Take a look at the Higher Education options with Gedu

EP Careers

At EP, we offer Careers and Employability Services to enhance our students' employability skills and job aspirations.

Our services include workshops, career events with external speakers, and personalised sessions with a Career Counsellor. Students gain access to recruitment events and receive job leads aligned with their backgrounds.

Our weekly Employability Workshops offer practical advice on topics such as CV and cover letter writing, interview preparation, and LinkedIn networking. Students also receive information sheets on industry trends and strategies to help them stand out to employers.



Social Programme

EP is committed to providing our students with a well-rounded learning experience. In addition to our high-quality English, French, German classes, we also offer a vibrant social activity programme that allows students to explore the city and make friends from all over the world. We encourage all of our students to participate!

Our social programme is packed with activities for every interest, from pub crawls and museum visits to theater trips and weekend getaways. We also offer a variety of free activities, so no student has to miss out on the fun.

Whether you're looking to experience the best of the destination's nightlife or learn about the city's rich history, our social programme has something for you.



Benefits of the service

Guiding students to effectively navigate the local job market.

Facilitating direct interviews between students and talent acquisition teams from partner companies.

Ensuring students' CVs receive priority consideration from partnered organisations.

Learning from industry experts on how to navigate the local job market and how best to enter desired fields.

Providing opportunities for students to secure full-time roles with growth potential at partnered companies.

Developing strategic planning and action plans tailored to a student's unique career goals and backgrounds.

Leveraging LinkedIn to spotlight and endorse exceptional students and their work experience and backgrounds using EP's global reach.

Delivering thoroughly researched, industry specific and up-to-date advice in a one-on-one setting to help navigate each employment opportunity and different industries in the global market.

Providing Non-Objection Certificates to allow students to work in part-time roles.

Connecting students with external recruitment and networking events and authentic job leads that match their skills and experience level.



Sample Programme (London)

	Mon	Tue	Wed	Thur	Fri
Afternoon	Conversation Club in a coffee shop	Richmond Park	National Gallery	Borough Market	St Paul's Cathedral
Evening	Greenwich	Outdoor Cinema	Arcelor Mittal Orbit	Tower Bridge	Pergola Paddington
Weekend Tours*	Stonehenge, Bath, Cambridge, Oxford and Windsor				

*Weekend tours during summer are organised by EP, weekend tours during winter periods are organised by third party providers



Check out our live Social Calendars



Accommodation

Your accommodation is an important part of your experience when studying English, French, German abroad. We understand the importance of finding the right accommodation during your studies. That's why we provide different options to meet the needs of different students.

The accommodation managers across our campuses are there to assist with arranging your stay – and with any issues during your studies. You can also book your accommodation on your own if you prefer.

Choose your accommodation:



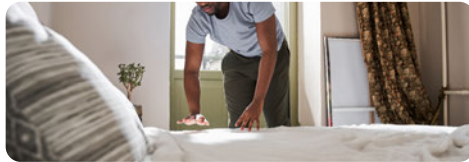
Student Residence

Student residences are built in large blocks, made to create a university-styled experience. The living spaces include shared cooking and communal spaces, with a variety of apartment styles to suit different requirements.



Shared Apartments

Choosing either a house share or a shared apartment provides your own personal space with the chance to socialise with fellow students from all over the world under one roof.



Homestay

One of the most important parts of studying abroad is the chance to take in a new culture first-hand. Staying in a homestay or hosted accommodation is a fantastic way to enhance your overall experience.



Aparthotels/Guest houses

The Aparthotel experience combines the best elements of a serviced apartment with the amenities of a hotel. Students have their own private living spaces, with more comfort than a typical hotel room, and better amenities and security than most serviced apartments.





theatre

EP English Path

EP

English Path

gedu



Part of **gedu**
GLOBAL EDUCATION



[englishpath.com](https://www.englishpath.com)