

# Accommodation

Accommodation is a vital part of your experience in a new country. Your new home is an important part of your study experience. Each school has specially chosen options to help make the most out of your stay. Homestay and student residences offer different accommodation experiences, but always meet the highest standards.

Please make sure you check with your representative, as all accommodation options are based on availability.

## What accommodation option should I choose?

The choice of accommodation depends on your preferences, needs, and budget. Below are some important factors you need to consider.

### Homestay

- Immerse yourself in local culture & customs.
- Host assistance for queries.
- Towels, kitchen utensils, and more provided.
- Budget-friendly.



- May not be as social.
- Host family rules may apply.
- It can be up to 75mins travel.



### Student residence

- Convenient location, typically close to campus.
- Easy access to good facilities and nearby amenities.
- 24h assistance.

- Noise levels might be high.
- Might be sharing facilities with other students.
- Might be expensive.

## Booking Student Accommodation in 3 simple steps

### Step 1

You can indicate your preferred type of accommodation (homestay, shared apartment or residence) on the application form during your application for a course. Our Student Services team will record the preferred choice of accommodation.

### Step 2

EP will be able to secure the accommodation option once the invoice has been paid. Our team will send you the accommodation confirmation with further details on the selected option.

### Step 3

You will need to confirm your arrival and send your flight details to our team, as soon as the flight is booked and no later than one week before the flight date. Our team will be able to book and confirm your accommodation and/ or transfers and provide more details within the confirmation document.

If you arrive at a residence or homestay between 22.00–08.00 you may be asked to book alternative accommodation in a hotel on the first night due to late/early arrival at the accommodation.

# Homestay

**Half board homestay\***      **2 meals per day**  
(breakfast, dinner).  
**14 meals per week.**  
(Mon-Sun).

**Bed and breakfast\***      **1 meal per day**  
(breakfast).  
**7 meals per week.**  
(Mon-Sun).

**Self catering -  
Adult homestay\***      **No meals provided.**  
Student will be able to  
cook in the kitchen.

\*Students that have chosen these options might not be allowed to cook in the kitchen and may have to order meals in from Deliveroo or Uber eats for example.



## Things students need to bring

Toiletries, personal items to make student's room feel like home, prescription medication, a small gift for the host family (not required).

## Meals provided

Yes (depends on booking type, please refer to the table at the top of the page).

Meals are usually eaten with the family unless otherwise arranged and special diets such as vegetarian, halal and other requirements can be catered for an additional fee. Please tell us if you have a special requirement when you request your accommodation.

**Breakfast:** Breakfast is usually a light meal consisting of cereal, fruit, toast, juice, or coffee. Hosts will usually ask you to prepare your own breakfast.

**Lunch:** You will be responsible for buying your own lunch at school, from a local restaurant, or the local shops.

**Dinner:** If you book Half Board, you will usually eat dinner with your host, or occasionally you may prepare your own meal with food supplied by your host, please expect your host to set the dinner time and let them know if you are unable to arrive on time.

## Services included

Bed linen, towels, telephone use for emergencies. Students need to make sure to discuss laundry with their host family after you arrive as laundry facilities will depend on the individual homestay.

**Extra cost of services:** Some hosts might charge a fee for the use of kitchen if you want to prepare your own meals.

## Will the Homestay arrange to pick up the student from the airport?

No, however, you can book your airport transfer with your EP school. The transfer to the accommodation will then be organised accordingly.

## Transport to school

Your host will help you to find your way to and from school on your first day and will show you how to use public transport.

## Where are the host families located?

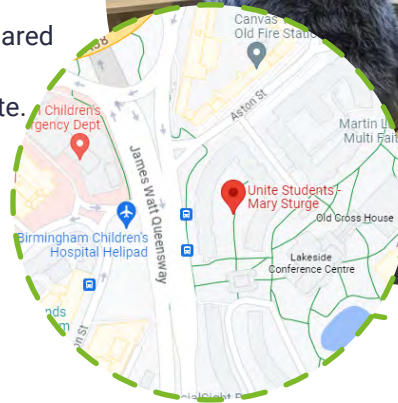
Homestays are situated within 30-55 minutes of the city centre in different areas of the city.

# Mary Sturge

Mary Sturge offers comfortable and modern facilities for you to rest and relax away from your studies. With the school a 15-minute walk or a 10-minute bus journey away, you will find this residence in the heart of the city with easy access to essential amenities.

- Private en-suite bathroom with full equipped shared kitchen and living space.
- 24-hour assistance and security available on-site.
- Common areas including pool, ping pong and study spaces.
- Outdoor courtyard.

**Address:** UNITE Mary Sturge, Aston Street, Birmingham, B4 7UJ



## About the residence

### Accommodation types:

Single room with a private bathroom and shared kitchen.

*Please consult us for up to date pricing.*

### Bedrooms:

The bedroom contains the following: bed, pillow, bedding, window, closet, mirror, chair, desk.

### Bed size:

3/4 size bed.

### Bathroom:

Private.

### Kitchen:

Shared kitchen with: microwave, kettle, toaster, cutlery, cooking utensils, fridge, freezer, oven.

### Facilities:

Common areas including pool, ping pong and study spaces, WiFi included, Outdoor courtyard, 24h reception.

### Extra cost facilities:

Laundry facilities (payable on-site).

**Visitors/guests:** No overnight guests.

**Smoking:** No smoking allowed anywhere in the residence.

**Noise:** Residents are required to respect all other residents and maintain a level of noise that does not disturb others. Quiet hours are 10pm-8am.

### Neighbourhood:

World-famous Bull Ring shopping area (10 minutes walking), local shops to buy essential items and other cafes and restaurants on your doorstep, EP Birmingham and New Street train station a short distance away.

### Reception/security desk:

24h reception & security on-site.

### Cleaning service:

Cleaning provided before check in and on check out. Change of bedding during your stay is not included. It is also your responsibility to maintain cleanliness in your room and in the common areas by washing your dishes, pans and cutlery after cooking.

### Beddings/towels:

Fresh clean linens and bedding provided at check-in. You are responsible for cleaning after check-in. Towels not provided.

### Minimum weeks requests:

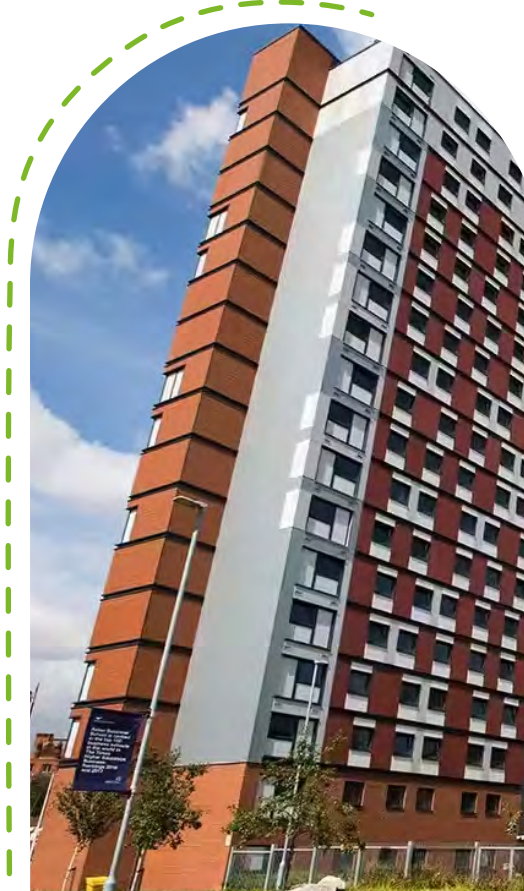
2-week minimum stay.

### Check-in/check-out:

From 2pm / before 10am.

### Accommodation location:

15 min walk to New St Station.

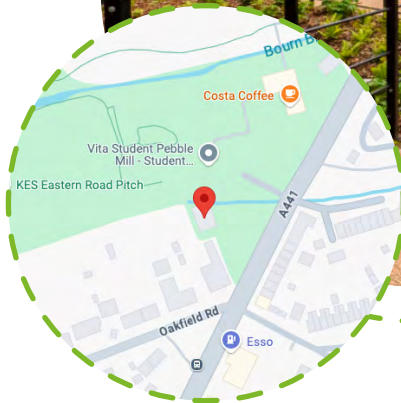


# VITA Pebble Mill

Located within a popular student area of the city and a short bus journey to the city centre, unwind from your lessons in the tranquil environment that this residence has to offer.

- Studio room with fully equipped private kitchen, private bathroom and air conditioning.
- Smart TV and super-fast WiFi in each room
- Free weekday breakfast available at the residence
- Coffee lounge with free tea and coffee available
- Cinema room and gym on-site
- 24-hour assistance and security available on-site
- Laundry facilities (payable on-site)
- Spacious common areas with billiards and table tennis
- Relaxing courtyard and gardens

**Address:** Pebble Mill Studios, Pershore Road, Birmingham, B29 7ES



## About the residence

### Accommodation types:

Single room with equipped bathroom and kitchen

### Bedrooms:

Double bed (towels not included)

### Kitchen:

Microwave oven, hob, cutlery, cooking utensils, fridge, freezer

### Facilities:

Common areas including pool, ping pong and study spaces, WiFi included, Outdoor courtyard, 24h reception.

### Surrounding area:

in the heart of the friendly suburb of Edgbaston and a short walk to regular public transport routes to the city centre and school, as well as supermarkets and other shops only a 10 minute walk away. Close to the popular student area of Selly Oak.

**Visitors/guests:** No overnight guests.

**Smoking:** No smoking allowed anywhere in the residence.

**Noise:** Residents are required to respect all other residents and maintain a level of noise that does not disturb others. Quiet hours are 10 pm-8am.

### Reception/security desk:

24h reception & security on-site.

### Cleaning service:

Cleaning provided before check-in and on check-out. Change of bedding during your stay is not included. It is also your responsibility to maintain cleanliness in your room by washing dishes, pans and cutlery after cooking.

### Beddings/towels:

Fresh clean linen and bedding provided at check-in. You are responsible for cleaning after check-in. Towels not provided.

### Minimum weeks required:

2-weeks

### Check-in/check-out:

From 4pm / before 10am.

### Accommodation location:

Up to 25 minutes by public transport to EP Birmingham and New Street Station, 30 minutes by taxi or 1 hour by public transport to Birmingham airport

