

Accommodation

Accommodation is a vital part of your experience in a new country. Your new home is an important part of your study experience. Each school has specially chosen options to help make the most out of your stay. Homestay and student residences offer different accommodation experiences, but always meet the highest standards.

All accommodation options are based on availability. Please make sure you check with your representative if we have availability.

Pros and cons for accommodation

Student Residence

- Convenient location, typically close to campus.
- Easy access to good facilities and nearby amenities.
- 24h reception.

- Noise levels might be high.
- Might be sharing facilities with other students.
- Might be expensive.

Homestay

- Immerse in local culture & customs.
- Host assistance for queries.
- Towels, kitchen utensils, and more provided.
- Budget-friendly.

- May not be as social.
- Host family rules may apply.
- It can be up to 75mins travel.

Booking student accommodation in 3 simple steps

Step 1

You can indicate your preferred type of accommodation (homestay, shared apartment or residence) on the application form during your application for a course. Our Student Services team will make a record of your preferred choice of accommodation.

Step 2

EP will be able to secure the accommodation option once the invoice has been paid. Our team will send you the accommodation confirmation with further details on the selected option.

Step 3

You will need to confirm your arrival and send your flight details to our team, as soon as the flight is booked and no later than one week before the flight date. Our team will be able to book and confirm your accommodation and/ or transfers and provide more details within the confirmation document.

If you arrive at a residence or homestay between 22.00–08.00 you may be asked to book alternative accommodation in a hotel on the first night due to late/early arrival at the accommodation.

Kiez Hostel Berlin

Kiez Hostel is a family-run business with great individuality and a very personal touch. There is a variety of private and shared rooms, each with its own vibrant style. The big shared kitchen and lounge provide a great space for students to get together for fun evenings.

- Shared and private bedrooms
- Shared kitchen
- Shared lounge
- Wi-Fi
- Cleaning included

 **Address: Marchlewskistraße 88, 10243 Berlin**



About the Residence

Accommodation types:

Private and Shared.
Shared bedroom-shared bathroom.
Private bedroom-shared bathroom.

Bedrooms: The bedroom contains the following: bed, pillow, bedding, chair, desk, window.

Bed size: Single bed.

Bathroom: Shared bathrooms on each corridor.
Lockable single bathrooms.

Kitchen: There is a kitchen in the hostel which everyone can use.

Facilities: Spacious lobby, study room and on-site laundry, WIFI.

Facilities at extra cost: Cosy lounge and kitchen for all guests to use. Free wifi. €3 for bed linen and towel set.

Cleaning service: There is a daily cleaning service of all bedrooms and bathrooms. Bathrooms are also checked a few times during the day.

Linens/towels: Fresh bedding and towels are provided at check-in for a charge of €3. Students staying for long periods can have a change free of charge at any time.

Neighbourhood: Your hostel is located in the party district of Friedrichshain-Kreuzberg, but in a quiet neighborhood right on Marchlewskistrasse. Restaurants, cultural institutions and cool hotspots are just a few minutes' walk away.

Visitors/guests: Visitors must leave by 11 pm. No overnight visitors.

Noise: Residents are required to respect all other residents and maintain a level of noise that does not disturb others. Quiet hours are 10 pm-8am.

Smoking: Smoking is prohibited in all facilities and in residents' rooms.

Reception/security:

Reception is manned from 9am – 1pm and from 5pm -9pm. Outside these hours there's a 24-hour phone and WhatsApp line.

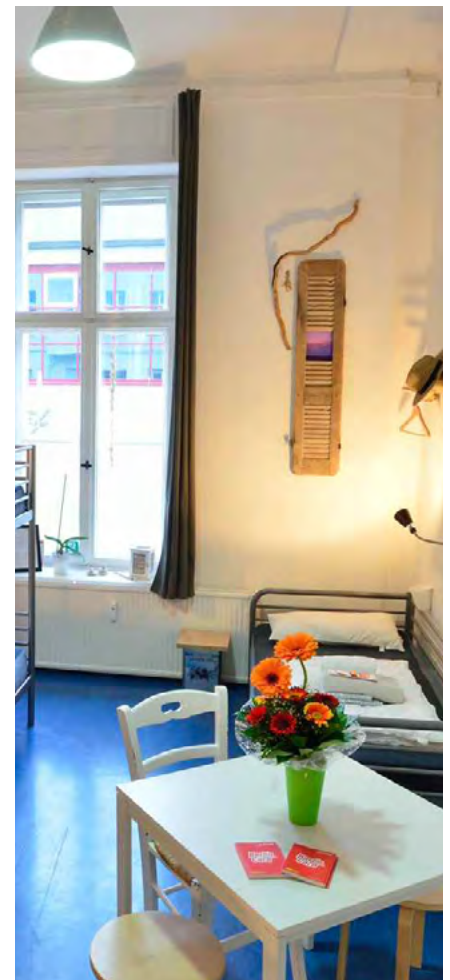
Minimum weeks requests:

1-week minimum stay. Booking from Saturday to Saturday.

Location of the accommodation:

Within 10 minutes walk of 2 train stations in the Friedrichshain-Kreuzberg district. 35 minutes by public transport to school.

CHECK-IN/CHECK-OUT: Check-in 5pm / Check-out 10.30am but flexible with prior notice.



Homestay

Half - board homestay

2 meals per day (breakfast, dinner) from Monday to Sunday. 14 meals per week.

- The average commute is between 15 and 60 minutes by public transportation.
- Live in the home of a local resident.
- Comfortable, safe environment with meals prepared for you.
- Opportunity to practice English with your host.



Things students need to bring

Toiletries, personal items to make student's room feel at home, prescription medication, SIM card, a small gift for the host family (not required).

Meals provided

Yes (depends on booking type, please refer to the table at the top of the page).

Breakfast: Breakfast is usually a light meal consisting of cereal, fruit, toast, juice, or coffee. Hosts will usually ask you to prepare your own breakfast.

Lunch: If full-board: Your host family will prepare a packed lunch for you, which usually consists of a sandwich, fruit or sweets and a drink.

Otherwise: You will be responsible for buying your own lunch at school, from a local restaurant, or the local shops.

Dinner: You will usually eat dinner with your host, or occasionally you may prepare your own meal with food supplied by your host.

Services included

Bed linen, towels, telephone use for emergencies, students need to make sure to discuss laundry with their host family after you arrive as laundry facilities will depend on your individual homestay.

Extra cost of services: No.

Will the Homestay arrange to pick up the student from the airport?

No. However you can book your airport transfer with your EP school. The transfer to your accommodation will then be organised accordingly.

Transport to school

Your host will help you to find your way to and from school on your first day and will show you how to use public transport.

Where are the host families located?

South Dublin.

Additional Information

Homestays are a 15 - 60 minute commute to the school.

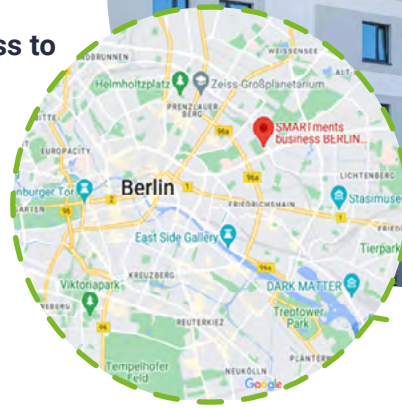
SMARTments Prezlauer Berg

This student residence is located in one of the trendiest parts of Berlin, offering a vibrant and stylish living experience. The fully equipped studios provide all the necessary amenities for a comfortable stay. Residents can enjoy smart temporary accommodation in a central location, only a short distance to the S-Bahn and tram, ensuring quick and easy access to public transportation.

- Spacious, fully equipped and furnished apartments
- Laundry facility on site
- Wi-Fi



Address: Storkower Str. 156a, 10407 Berlin



About the Residence

Accommodation types:

all studio flats

Bedrooms: The bedroom contains the following: bed, pillow, bedding, chair, desk, window, wardrobe and bedside lamp.

Bed size: Single bed.

Bathroom: Private bathroom with toilet, sink and shower. Shampoo, shower gel and hairdryer provided.

Kitchen: The in-unit kitchen contains the following: fridge, freezer, hob, cutlery, plates, pans, microwave, coffee machine, toaster and kettle.

Facilities: Onsite laundry, ironing board with iron, vending machine selling drinks and snacks and bike parking.

Cleaning service: There is a weekly clean included. Cleaning products are available if you want to clean outside this time.

Linens/towels: Fresh clean linen and towels are provided at check-in. They are changed once a week during the cleaning service.

Neighbourhood: Local restaurants, cafés and bars offer food and drink from many countries, and there are clubs and theatres nearby. Within walking distance, the Volkspark is a great place to go for a walk and relax. You can also use Berlin's largest event hall - the Velodrom - to go swimming when there are no competitions taking place.

Visitors/guests: Visitors must leave by 9 pm. No overnight visitors. Penalty fine for visitors in the unit after 9 or overnight.

Noise: Residents are required to respect all other residents and maintain a level of noise that does not disturb others. Quiet hours are 10 pm-6am.

Smoking: All facilities and residents' room are non-smoking.

Reception/security: Manned reception desk during the week. At weekends and out of hours they can be reached by phone.

Minimum stay: 2 nights

Location of the accommodation:

4-minute walk to the S-Bahn station. 34 minutes from the school via public transport.

CHECK-IN/CHECK-OUT: Check-in from 3pm / Check-out by 11am.



SMARTments City-West

In one of the most desirable residential areas of the city, your new, fully equipped apartment is close to the Kurfürstendamm and many important sights such as Charlottenburg Palace and Brandenburg Gate. By train, you can get around quickly and easily.

- Spacious, fully equipped and furnished apartments
- Laundry facility on site
- Wi-Fi

 **Address:** Fasanenstraße 2, 10623 Berlin



About the Residence

Accommodation types:
studio flats

Bedrooms: The bedroom contains the following: bed, pillow, bedding, chair, desk, window, wardrobe and bedside lamp.

Bed size: Single bed.

Bathroom: Private bathroom with toilet, sink and shower. Shampoo, shower gel and hairdryer provided.

Kitchen: The in-unit kitchen contains the following: fridge, freezer, hob, cutlery, plates, pans, microwave, coffee machine, toaster and kettle.

Facilities: Onsite laundry, ironing board with iron, vending machine selling drinks and snacks and bike parking.

Cleaning service: There is a weekly clean included. Cleaning products are available if you want to clean outside this time.

Linens/towels: Fresh clean linen and towels are provided at check-in. They are changed once a week during the cleaning service.

Neighbourhood: Close to the Kurfürstendamm, where there are numerous shopping opportunities and surrounded by cafés, bars and restaurants, so you will never get bored. Being only 300m from a train station, you can get to any destination in the city very easily.

Visitors/guests: Visitors must leave by 9 pm. No overnight visitors. Penalty fine for visitors in the unit after 9 or overnight.

Noise: Residents are required to respect all other residents and maintain a level of noise that does not disturb others. Quiet hours are 10 pm-6am.

Smoking: All facilities and residents' room are non-smoking.

Reception/security: Manned reception desk during the week. At weekends and out of hours they can be reached by phone.

Minimum stay:
2 nights

Location of the accommodation:
4-minute walk to the S-Bahn station. 16 minutes from the school via public transport.

CHECK-IN/CHECK-OUT: Check-in from 3pm / Check-out by 11am.

