



English
Path



Student Handbook

Paris

2024/2025



Welcome to
English Path.

This guide will help
you make the most
of your experience
at EP Paris.

Contents

About Paris	4
About the school.....	6
About your course.....	8
Accommodation.....	11
Social Programme	19
Recommendations	20
When you arrive	21
Airport transport	24





About Paris



Famous landmarks

- Eiffel Tower, Champs-Élysées, Centre Pompidou, Musée du Louvre, Notre-Dame cathédral, Palais Opéra Garnier, Galeries Lafayette.



City personality

- Academic, active, artistic, big city, bike-friendly, business capital, creative, moving, multi-cultural, eco-friendly, foodie scene, historical, friendly, green, iconic city, modern, unique, vibrant, youthful, world-renowned capital.



What makes this town unique?

- Paris is unique due to its unparalleled blend of history, culture, art, and romance; encapsulated within its iconic landmarks, culinary delights, and vibrant atmosphere.



Transport within a 10 minute walk

- Métro, bus, tramway and RER.



Restaurants within a 10-minute walk

- American, British, Chinese, French, Greek, Indian, Italian, Japanese, Korean, Mexican, Seafood, Thai, Vegetarian, Moroccan. Street food and gastronomy at each corner.



Alternative things to do

- Get lost among the many museums, touristic sites, exhibitions and events all year long! Sporty? This year's Olympics show how strong our sport culture is, with as many as 1000 fitness centres both indoor and outdoor.



5

Reasons to choose this city

1

A well-connected city: nine train stations, two airports. True freedom.

2

A beautiful city with rich architectural diversity.

3

Home of gastronomy and a variety of cuisine.

4

European capital of culture (historical sites & museums) + special passes for students.

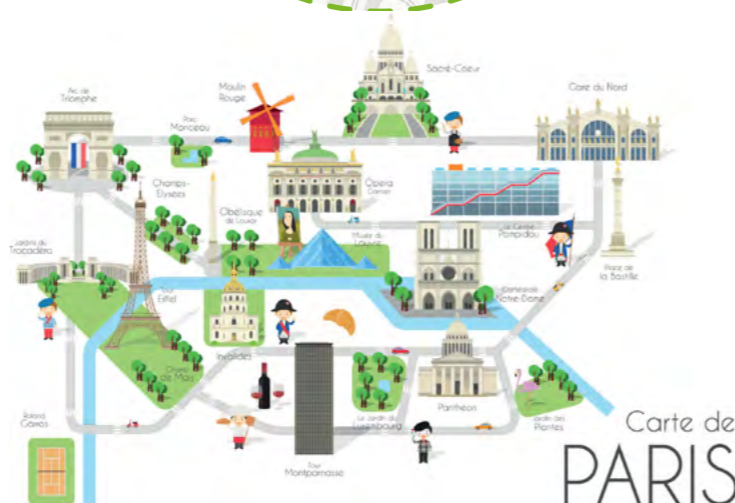
5

Within the city there are seven universities and ten others nearby.



Why choose to study on our Paris campus?

- **Located** within Paris, in a safe and educational environment
- **Minutes from** subway station and buses
- **Interesting** & varied courses offered
- **New** installations, and high-end equipment
- **Experienced** Customer Experience & Academic Team



Find us on Google maps

Address: 98 Rue Didot, 75014 Paris, France
At this address since: 2024

Phone: +33 159 435 661
Emergency Phone: +33753197437

Staff

Meet the team



- **Languages spoken by staff:** French, English, Italian, Spanish.

Services & facilities

- **Buildings:** 1
- **Floors:** 2
- **Total number of classrooms:** 3+
- **Campus capacity:** 100 students

School facilities: Student lounge, self-study area with PC equipped, Wi-Fi (Free), elevator for students with mobility issues, modern & spacious classrooms with smart TVs, cafeteria, library.

Other services provided: Social activity programme, airport transfers, medical insurance.

Levels of English and French offered: All levels.

Reception: The friendly **student services** staff can direct you to the EP offices and classrooms. A Student Services Officer and an Academic Coordinator will always be present to answer any questions you may have.

School holidays & Paris public holidays

The school is going to be closed on the below dates. Please make sure to book your course/accommodation accordingly. Course days that fall on a public holiday are not reimbursed.

Public holidays will be:

- **2024:** 01 Nov, 11 Nov, 23 - 27 Dec.
- **2025:** 01 Jan, 18 - 21 Apr, 01 May, 08 May, 29 May, 08 Jun, 9 Jun, 14 Jul, 15 Aug, 01 Nov, 11 Nov.

The above dates are observed as holidays in the year. If you arrive on a week where the Monday is a holiday, your first day of school will be a Tuesday.



Close to your EP school

Our centrally located school is walking distance to:

- | | |
|---|---|
| Cafes and Restaurants
1-5 minutes | Subway Station
8 minutes |
| Grocery Store
4 minutes | Bus Stop
2-5 minutes |
| Post Office
5 minutes | Montparnasse Train Station
25 minutes |
| Hospital
9 minutes | Mall
17 minutes |
| Bank/ ATM
5 minutes | Gym
14 minutes |

Need help? Not satisfied? Have a problem?

At EP we believe that communication and an open-door policy is key to efficiently resolving any issue you might have. If you need help, are not satisfied with one of our services or you need advice, please talk to our staff at school. They will be able to help and assist quickly with any concerns you may have.

Your first day at school

Morning students

Also for Semi-Intensive Afternoon

- 08:45 – Arrival at school + check in
- 09:10 – Writing and speaking placement test
- 10:00 – Induction
- 11:00 – First day class starts
- 12:30 – First day class finishes
- 12:30 – Orientation tour

Afternoon students

- 13:15 – Arrival at school + check in
- 13:30 – Writing and speaking placement test
- 14:00 – Induction
- 14:45 – Orientation tour
- 15:30 – First day class starts
- 17:00 – First day class finishes

Induction: this includes a placement test, induction presentations about the school, academic programmes and the distribution of class timetables.

An orientation tour of the local area: this includes useful information, such as nearby facilities, pharmacy, post office, bus stop, etc.

An evening welcome party + drink.

On your first day, please bring your passport and proof of medical insurance.

Your weekly class timetable

French Courses

	Hours pw	What	Lesson times
Classic Morning	15	General French	9:00 - 12:15
Semi-Intensive Morning	20	Classic Morning + 1 Elective	9:00 - 13:30

English Courses

	Hours pw	What	Lesson times
Classic Afternoon	15	General English	13:45 - 17:00
Semi-Intensive Afternoon	20	Classic Afternoon + 1 Elective	12:30 - 17:00

COURSES

French or English

- **Classic (Morning/Afternoon)**
15 Hours per week
- **Semi-Intensive (Morning/Afternoon)**
20 Hours per week
- One-to-One
- Pathway programme

Extracurricular activities

- Monthly course tutorials
- Monthly skills test
- Weekly unit test
- Masterclass Programme
- Conversation clubs
- Study Clinics

Electives list sample

English Path offers a variety of elective courses that allow students to explore their interests and develop their skills. These courses are taught by experienced and qualified teachers, and they are a great way to supplement your general English studies. Electives depending on your level of English, the EP campus and current availability:

- Speaking
- Listening
- Reading
- Writing
- Pronunciation
- Idioms and Phrasal verbs
- Grammar
- Vocabulary
- Everyday English
- Debate and Public Speaking
- Business English
- English for Hospitality
- Digital Marketing
- Personal Branding
- IELTS Preparation
- Academic Skills
- Employability Skills

School material

Books: Empower 2nd Edition (Cambridge) + digital pack; Language Hub (Macmillan) + digital pack.

Additional material used: audio, digital presentation material, authentic materials.

Class outings: The students will often have lessons 'outside' which allows them to use their new language skills in action.

Students

Average number of students per class: 15

Minimum age of students: 16

Average age of students*: 27 years old

Nationality mix*: Students from all over the world

*As per 2023 stats. Nationality mix and age varies.

End of course certificate: You will receive a course certificate at the end of your course.

 @englishpathschools



Teaching methodology

At English Path we use the communicative approach which means:

- A focus on speaking
- Interactive lessons
- Noticing students' gaps and reacting to them
- Going beyond the textbook
- English for real life outside the classroom
- Understanding each student's individual needs

All EP teachers are trained in this approach from their first day, so students have the same experience in all levels at all EP locations.

Take a look at our graduation ceremony



Accommodation

Accommodation is a vital part of your experience in a new country. Your new home is an important part of your study experience. Each school has specially chosen options to help make the most out of your stay. Homestay and student residences offer different accommodation experiences, but always meet the highest standards.

All accommodation options are based on availability. Please make sure you check with your representative if we have availability.

What accommodation option should I choose?

The choice of accommodation depends on your preferences, needs, and budget. Below are some important factors you need to consider.

10 12

Homestay

- Immerse in local culture & customs.
- Host assistance for queries.
- Towels, kitchen utensils, and more provided.



- May not be as social.
- Host family rules may apply.
- It can be up to 75mins travel.

Student Residence

- Convenient location, typically close to campus.
- Easy access to good facilities and nearby amenities.
- 24h reception.

- Noise levels might be high.
- Might be sharing facilities with other students.
- Might be expensive.

Hostel

- Full services (housekeeping, room service)
- Flexibility (no long-term commitment)
- Affordable option

- Little privacy; Sharing room with others
- Impersonal, limited customization

Booking Student Accommodation in 3 simple steps

Step 1

You can indicate your preferred type of accommodation (homestay, shared apartment or residence) on the application form during your application for a course. Our Student Services team will record the preferred choice of accommodation.

Step 2

EP will be able to secure the accommodation option once the invoice has been paid. Our team will send you the accommodation confirmation with further details on the selected option.

Step 3

You will need to confirm your arrival and send your flight details to our team as soon as the flight is booked and no later than one week before the flight date. Our team will be able to book and confirm your accommodation and/ or transfers and provide more details within the confirmation document.

If you arrive at a residence or homestay between 22.00–08.00 you may be asked to book alternative accommodation in a hotel on the first night due to late/early arrival at the accommodation.

Homestay

Half - board homestay

2 meals per day (breakfast, dinner) from Monday to Sunday. 14 meals per week.

- The average commute is between 15 and 60 minutes by public transportation.
- Live in the home of a local resident.
- Comfortable, safe environment with meals prepared for you.
- Opportunity to practice English with your host.

Things students need to bring

Toiletries, personal items to make student's room feel at home, prescription medication, SIM card, a small gift for the host family (not required).

Meals provided

Yes (depends on booking type, please refer to the table at the top of the page).

Breakfast: Breakfast is usually a light meal consisting of cereal, fruit, toast, juice, or coffee. Hosts will usually ask you to prepare your own breakfast.

Lunch: If full-board: Your host family will prepare a packed lunch for you, which usually consists of a sandwich, fruit or sweets and a drink.

Otherwise: You will be responsible for buying your own lunch at school, from a local restaurant, or the local shops.

Dinner: You will usually eat dinner with your host, or occasionally you may prepare your own meal with food supplied by your host.



Services included

Bed linen, towels, telephone use for emergencies, students need to make sure to discuss laundry with their host family after you arrive as laundry facilities will depend on your individual homestay.

Extra cost of services: No.

Will the Homestay arrange to pick up the student from the airport?

No. However you can book your airport transfer with your EP school. The transfer to your accommodation will then be organised accordingly.

Transport to school

Your host will help you to find your way to and from school on your first day and will show you how to use public transport.

Where are the host families located?

Paris

Additional Information

Homestays are a 15 - 60 minute commute to the school.

Student Residence

(Aparthotel Adagio Paris Malakoff Châtillon)

Finding ways to relax when on campus plays a big part in any student's life, so whether it's a hot cup of coffee, a whopping burger or some well needed retail therapy that chills you out, this residence has it all.

- Private studio apartments
- Spacious, fully equipped and furnished apartments
- Laundry facility on site
- Private kitchen
- Wi-Fi
- Weekly cleaning included. Extra cleaning service available at a fee



Address: 60 Avenue Pierre Brossolette 92240 Malakoff

About the Residence

Accommodation types: Studio apartments

Bedrooms: The studio contains the following: bed, pillow, bedding, chair, desk, window, wardrobe, bedside tables with lamps, flat screen TV, sofa, dining table with chairs.

Bed size: Often convertible into double bed or two single beds.

Bathroom: Ensuite bathroom with shower or bathtub, hairdryer, towels and basic toiletries.

Kitchen: The studio kitchen contains the following: fridge, freezer, stove, oven, cutlery, plates, pans, microwave, dishwasher, kettle.

Facilities: Fitness room, breakfast room and laundry room onsite, and WIFI.

Facilities at extra cost: Laundry room onsite: cost of washing machine €4-5.

Cleaning service: Light cleaning service once a week. It is also the students' responsibility to maintain cleanliness in the kitchen by washing their dishes, pans and silverware after cooking.

Linens/towels: Fresh clean linens and bedding provided at check-in. Students are responsible for cleaning after check-in. Towels are provided.

Neighbourhood: The Adagio Paris Malakoff Châtillon aparthotel is near the Mairie de Montrouge line 4 metro stop, mini-markets, cafes and restaurants.

Visitors/guests: Visitors are only allowed in the common areas & must leave by 9pm. No overnight visitors. Penalty fine for visitors in unit after 9 or overnight.

Noise: You are required to respect all other residents and maintain a level of noise that does not disturb others. Quiet hours are between 10pm and 8am.

Smoking: All facilities and residents' rooms are non-smoking.

Reception/security: Reception is open 24/7.

Minimum weeks requests: 4 weeks minimum stay. Booking from Saturday to Saturday or Sunday to Sunday.



Student Residence

(Aparthotel Adagio Access Vanves Porte De Versailles)

The Adagio Access Vanves Porte de Versailles aparthotel benefits from a prime location near the Parc des Expositions and Palais des Sports. The aparthotel also benefits from very good public transport links less than 10 minutes away, allowing you to travel easily into Paris in a short amount of time. The studios are completely furnished and fitted with a fully equipped kitchen. You benefit from access to a heated indoor swimming pool and private car park.

- Private studio apartments
- Spacious, fully equipped and furnished apartments
- Laundry facility on site
- Private kitchen
- Wi-Fi
- Weekly cleaning included. Extra cleaning service available at a fee.

 **Address:** 26 rue Jean Bleuzen 92170 Vanves

About the Residence

Accommodation types:
Studio apartments

Bedrooms: The studio contains the following: bed, pillow, bedding, chair, desk, window, wardrobe, bedside tables with lamps, flat screen TV, sofa, dining table with chairs.

Bed size: Often convertible into double bed or two single beds.

Bathroom: Ensuite bathroom with shower or bathtub, hairdryer, towels and basic toiletries.

Kitchen: The studio kitchen contains the following: fridge, freezer, stove, oven, cutlery, plates, pans, microwave, dishwasher, kettle.

Facilities:- Heated indoor pool, breakfast room, and laundry room onsite, plus WiFi.

Facilities at extra cost: Laundry room onsite: cost of washing machine €4-5

Neighbourhood: Situated on the south side of Paris, Vanves is a very attractive suburb of the city. Many buildings, including the church of St. Remy and the castle of the Princes of Condé, now Lycée Michelet, are witness to its rich past. It has a delightful town square - the Place de

la Republique - where the Town Hall is situated. There are thrice-weekly markets where over 50 traders sell everything from local food specialities of meat, fish, game and cheese through to Italian and Asian products and clothing.

Visitors/guests: Our apartments are for the use of our students only.

Noise: You are required to respect all other residents and maintain a level of noise that does not disturb others. Quiet hours are between 10pm and 8am.

Smoking: All facilities and residents' rooms are non-smoking.

Reception/security desk: Reception is open 24/7.

Cleaning service: A cleaning service is provided once a week.

Bed linen/towels: Fresh clean linens and bedding provided at check-in. Students are responsible for cleaning after check-in. Towels are provided.

Minimum weeks requests: 4 weeks minimum stay. Booking from Saturday to Saturday or Sunday to Sunday.

Check-in/check-out: Check in between 3pm and 9pm / Check out 11am.

Location of the accommodation: 30 min walk to our school or 20 mins by public transport.



ECLA Massy-Palaiseau

The ECLA Massy-Palaiseau residence offers a vibrant and modern living environment for those seeking convenience, comfort, and community. It is located in the heart of the Paris-Saclay area, just south east of the centre. The residence boasts stylish apartments, complete with high-speed internet and all the necessary amenities to make student life easy. It also has a wide range of shared spaces, including study rooms, a gym, cinema room, and social lounges, for both study and social interaction. With regular events and a supportive international community, ECLA Massy-Palaiseau provides more than just a place to live—it's a vibrant, student-focused community where you can thrive academically and socially.

- Spacious, fully equipped and furnished duplex apartments
- Laundry facility on site
- Gym and sports field
- Cinema rooms
- Library
- Music studio
- Workroom
- Chillroom
- Sports Bar
- Wi-Fi
- Cleaning not included

About the Residence

Accommodation types:
Shared T2 duplex with twin beds

Bed size: Single bed

Bedrooms: The bedroom contains the following: bed, pillow, bedding, wardrobe and bedside table.

Bathroom: Toilet, sink and shower

Kitchen: The in-unit kitchen contains the following: fridge, freezer, stove, oven, cutlery, plates, pans and microwave.

Facilities:- Spacious lobby, study room and laundry room onsite, Wifi, gym, sports fields, games rooms, cinema room and a library.

Extra cost: Laundry room onsite - €9 for washer and drier
Cleaning service - €35

Smoking: All facilities and residents' rooms are non-smoking.

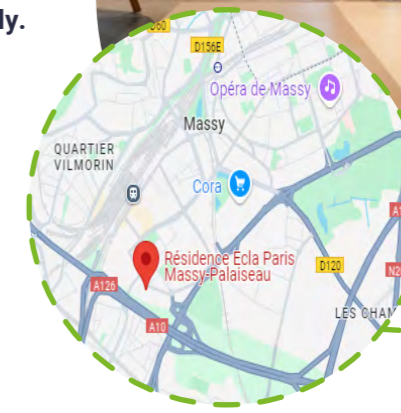
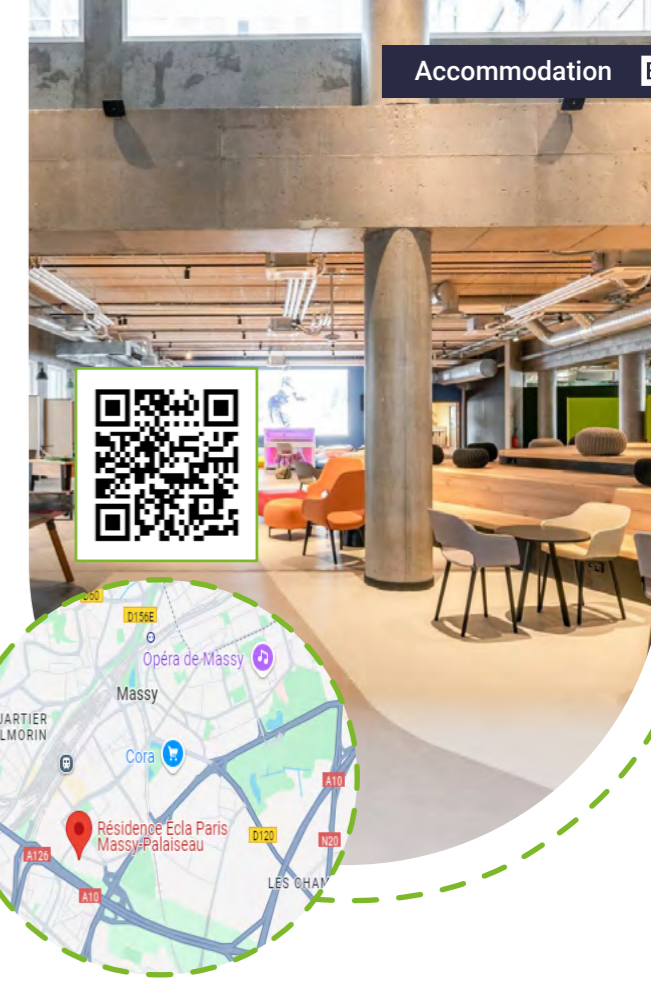
Reception/security desk: The reception desk is manned from 7am to 11pm on weekdays and from 10am to 6pm at weekends. There is a number you can call out of hours and a security guard who can assist.

Neighbourhood: The ECLA Massy-Palaiseau residence is situated in the heart of the Paris-Saclay area, a vibrant and rapidly developing neighborhood. It offers plenty of green spaces, including parks and nature trails, which are perfect for jogging, cycling, or just relaxing outdoors. The nearby Parc de Vilgénis and Parc de la Tuilerie are popular spots for picnics and leisure activities. The area around Massy-Palaiseau has a variety of shops, cafes, and restaurants catering to different tastes and budgets. The nearby Massy Atlantis district is a bustling hub with shopping centres, cinemas and eateries, providing plenty of entertainment options.

Visitors/guests: Visitors are allowed but must report to reception on arrival. Students can get a discount for any guests who wish to stay overnight.

Noise: Residents are required to respect all other residents and maintain a level of noise that does not disturb others. Quiet hours are 10 pm-8am.

Cleaning service: You are responsible for keeping your room clean. There is a full cleaning kit available. You can request an extra cleaning service which costs €35.



 **Address:** 16 Avenue Emile Baudot, 91120

Bed linen/towels: Fresh clean bedding and towels are provided at check-in. You can request to have them changed during your stay.

Minimum weeks requests: 4 weeks minimum stay. Booking from Saturday to Saturday.

Check-in/check-out: Check-in and check-out times are communicated via the platform TIMIFY. Details will be provided on the booking confirmation.

Location of the accommodation: 15 minute walk from Massy-Palaiseau station.



Student Hostel (Enjoy Hostel)

Enjoy Hostel is located near Gare Montparnasse on the Left Bank. This modern establishment welcomes travellers from all origins in a spirit of sociability and sharing. Retail therapy that chills you out, Campus Hub has it all.

- Clean and modern dorms of up to 8 beds with shared bathrooms.
- Wi-Fi
- Dining Room
- Living room
- Close to many metro stations and restaurants
- Coffee machines

Address: 5 Rue des Plantes 75014 Paris

About the Residence

Accommodation types: Basic Hostel

Bed size: Single and bunk bed combinations.

Bedrooms: The dorms contain the following: bed, pillow, bedding, chair, table, window, wardrobe - small padlock is needed for this (not provided by the hostel).

Bathroom: Shared bathroom

Kitchen: The kitchen in the unit contains the following: fridge, microwave, sink, coffee machines.

Facilities: - Wi-Fi, basic fitted kitchen, fridge.

Neighbourhood: The Parc des Expositions and Palais des Sports are nearby. There are very good public transport links less than 10 minutes away, allowing you to travel easily into Paris in a short amount of time.

Visitors/guests: Our hostels are for the use of our tenants only.

Noise: You are required to respect all other residents and maintain a level of noise that does not disturb others. Quiet hours are between 10pm and 8am.

Smoking: All facilities and residents' rooms are non-smoking.

Reception/security desk: Reception is open 24/7.

Cleaning service: Cleaning service is provided every morning.

Bed linen/towels: Fresh clean bedding provided at check-in. Towels are not provided.

Minimum weeks requests: 1 week minimum stay.

Check-in/check-out: Check in between 3pm and 9pm / Check out 11am.

Location of the accommodation: 15 min walk to our school.



ECLA Villejuif

ECLA Villejuif in Paris offers a modern and vibrant living environment perfect for those seeking convenience and comfort. The residence boasts excellent onsite facilities, including a well-equipped gym, study rooms, communal lounges, and a vibrant café, creating an ideal setting for both work and relaxation. With high-speed internet, a secure entry system, and laundry services, you have everything you need for a seamless living experience. Located near public transport links, ECLA Villejuif provides easy access to central Paris, making it an attractive choice to enjoy the best of city life, while benefiting from a supportive residential community.

- Laundry facility on site
- Gym
- Cinema rooms
- Library
- Workroom
- Chillroom
- Sauna
- WI-FI
- Cleaning not included

Address: 20 Rue Marcel Paul, 94800 Villejuif

About the Residence

Accommodation types: Studio for single occupancy

Bedrooms: The bedroom contains the following: bed, pillow, bedding, wardrobe and a desk/workspace.

Bed size: Double bed

Bathroom: Toilet, sink and shower.

Kitchen: The in-unit kitchen contains the following: fridge, hob, cutlery, plates, pans and a microwave.

Facilities: Spacious lobby, study room and laundry room onsite, wifi, gym, games rooms, cinema rooms and a library.

Facilities at extra cost: Laundry room onsite - €9 for washer and drier
Cleaning service - €35

Cleaning service: You are responsible for keeping your room clean. There is a full cleaning kit available. You can request an extra cleaning service which costs €35.

Linens/towels: Fresh clean bedding and towels are provided at check-in. You can request to have them changed during your stay for an extra €20 per month.

Neighbourhood: ECLA Villejuif is located in Villejuif, a suburb to the south of central Paris. The area around ECLA Villejuif has various supermarkets, shops, cafes, and restaurants. There are also parks and green spaces nearby such as Parc des Hautes-Bruyères. Villejuif is well-connected to central Paris via metro lines (notably Line 7) and buses, making it easy to commute to the city centre.

Visitors/guests: Visitors are allowed but must report to reception on arrival. Students can get a discount for any guests who wish to stay overnight.

Noise: Residents are required to respect all other residents and maintain a level of noise that does not disturb others. Quiet hours are 10 pm-8am.

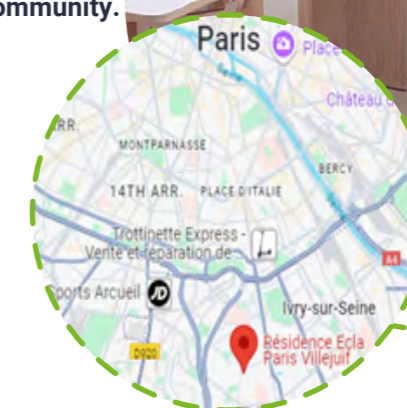
Smoking: All facilities and residents' rooms are non-smoking.

Reception/security: The reception desk is manned from 7am to 11pm on weekdays and from 10am to 6pm at weekends. There is a number you can call out of hours and a security guard who can assist.

Minimum weeks requests: 4 weeks minimum stay. Booking from Saturday to Saturday.

Check-in/check-out: Check-in and check-out times are communicated via the platform TIMIFY. Details will be provided on the booking confirmation.

Location of the accommodation: 10 minute walk from Villejuif station.





Social Programme

Paris, the City of Light, is an enchanting metropolis that effortlessly marries history, culture, and romance. From the iconic silhouette of the Eiffel Tower to the charming cobblestone streets of Montmartre, every corner reveals a story waiting to be discovered. The city's museums, such as the Louvre and Musée d'Orsay, showcase some of the world's most treasured art collections, while its culinary scene tantalizes the taste buds with exquisite French cuisine. Paris exudes an undeniable attraction, drawing millions of visitors each year to wander along the Seine, sip coffee at sidewalk cafes, and immerse themselves in its timeless elegance.

Examples of social activities

- International meetup
- Trip Eiffel Tower
- Trip Louvre Museum
- Notre-Dame Cathedral
- Seine River cruise
- Wine regions tour
- Place Plumereau tour
- Tours Old Town (Vieux Tours)
- Jardin des Prébendes d'Oé tour
- Calanques National Park

Check our live Social Programme here



Example timetable

Mon	Tues	Wed	Thurs	Fri	Sat/Sun
Orientation walk	Conversation Club	Place Plumereau tour	Football match	International meetup – English Cafe	Trip Louvre Museum
Welcome party	International dinner	Karaoke	Calanques National Park	Seine River cruise	Wine regions tour
					Paddle Sea Activity



Recommendations

Checklist & other useful information

Here are a few important items that you should bring with you:

- Passport
- Acceptance letter
- Accommodation letter
- Proof of health/medical insurance
- A bit of cash and credit/debit cards/ Apple or Google Pay
- Weather-appropriate clothing (depending on the season you come to Paris)
- Adaptor for electrical appliances
- Prescription medication and medical records
- Emergency information

Before you leave your country

Here are some important things you need to know to make your arrival as smooth as possible: use our checklist to ensure you don't forget anything and are prepared for the exciting times ahead.

Pocket money

Recommend weekly budget: 250€. This should cover expenses, laundry, local travel and activities. You will need additional money if you want to take weekend trips. Bring 100€ with you in cash and a debit or credit card. You will need to check with your financial institution to make sure you will be able to withdraw money from a French ATM. Do not bring foreign currency. It is not wise to carry around large amounts of cash.

Clothing

Most students dress casually for classes, but you should bring nice clothes for going out and sportswear for sports and outdoor activities. The climate is changeable and maybe different from your own. The typical temperature is 20-35°C in the summer and 0-10°C in the winter, although it can drop below freezing. Bring waterproof clothing if you're arriving in the autumn or winter.

Electrical current

Standard voltage in France is 220 volts; remember to bring an adaptor with you or buy one when you arrive.

School notifications

We encourage you to follow the school's Instagram account before you arrive and especially during your stay. This will give you an idea of what is happening at the school and help you connect with staff and students. This is also where we will post notification of any unexpected school closures: it is important you check our Instagram account for any messages while you are attending the school, especially if there is severe weather in the area (e.g. snowstorm, flood, etc.). If the school cannot open or school opening will be delayed, we will post a message as soon as possible (the night before or in the morning) to advise you of this, along with information on how to get further updates and any alternate scheduling (if applicable). Follow EP!

[@englishpathschools](https://www.instagram.com/englishpathschools)

When You Arrive in Paris

Arriving at the airport in a foreign country can be overwhelming. To better prepare yourself, make sure that you have read the information below about your arrival and how to get to your accommodation. If you get lost or confused upon arrival, don't be afraid to ask the airport staff for help as they will be happy to give assistance.

EP transfers

Students should arrive at Roissy Charles de Gaulle / Orly Airport. We request that you book your flights according to the starting date of your specific programme. You must arrive on the Saturday or Sunday prior to your course start date. If you have booked a transfer service, a driver will meet you outside the customs area and drive you to your homestay or residence. Please ensure you arrange and pay the transfer fee in advance.

Transfer service emergency contact details

If you have any flight changes, miss a connecting flight or need help meeting the transfer service, you should call one of the following emergency numbers. Please be prepared to tell them your name, school name (English Path) and location. Students should only accept a transfer from a greeter with the official English Path signage.

Independent transfers

- RER to Paris Cost: 13€, Journey time: 30 minutes
- TAXI SERVICE Cost: 50-60€ (tips are not mandatory!), Journey time: 45 minutes depending on location of homestay/residence

Staying safe at school:

If you or another student has an accident or needs urgent medical attention, please come to reception where the First Aider is located.

Fire safety: If you discover a fire, press the fire alarm button on the nearest alarm. Leave the building immediately via the fire exit. Make sure you tell a member of EMA staff exactly what happened so they can call **18**. If you hear the fire alarm, leave the building immediately. Do not run, use the lift or stop to collect your belongings. EMA staff will guide you to the fire exit. Go to the assembly point. Follow any instructions given by a member of EMA staff and do not go back into the building until you are told to do so by EMA staff.

Personal safety and looking after valuables:

Paris is generally a safe place but as with a lot of big cities, you should always be alert. Some tips are: Be alert when you are walking alone at night. Avoid carrying large amounts of cash. Do not leave your belongings unattended. In France, you do not need to always carry your identification card or passport with you, you can keep it at home and carry a picture of your ID on your phone or a photocopy in your bag.



EP When you arrive



Emergency services

- Call 18 in case of fire.
- Call 17 if you need the police.
- Call 15 in case of a medical emergency.



Medical costs

Medical costs are at the discretion of your local doctor or hospital. Minimum medical costs are as follows:

- Consultation with a doctor: 25-90€
- Prescriptions at a chemist: 5-70€
- Dental treatment: 80€
- Eye test or new glasses: 90-300€



Laws

- No one under the age of 18 in France may buy or consume tobacco or alcohol, including beer and wine. It is against the law to buy tobacco or alcohol for someone you know who is under the age of 18.
- Driving under the influence of alcohol is a very serious crime and police make regular random checks.
- You will need international ID to enter bars, clubs or pubs (e.g. Passport, ID card, driving license).
- Buying, selling and using drugs is illegal.



Student code of conduct

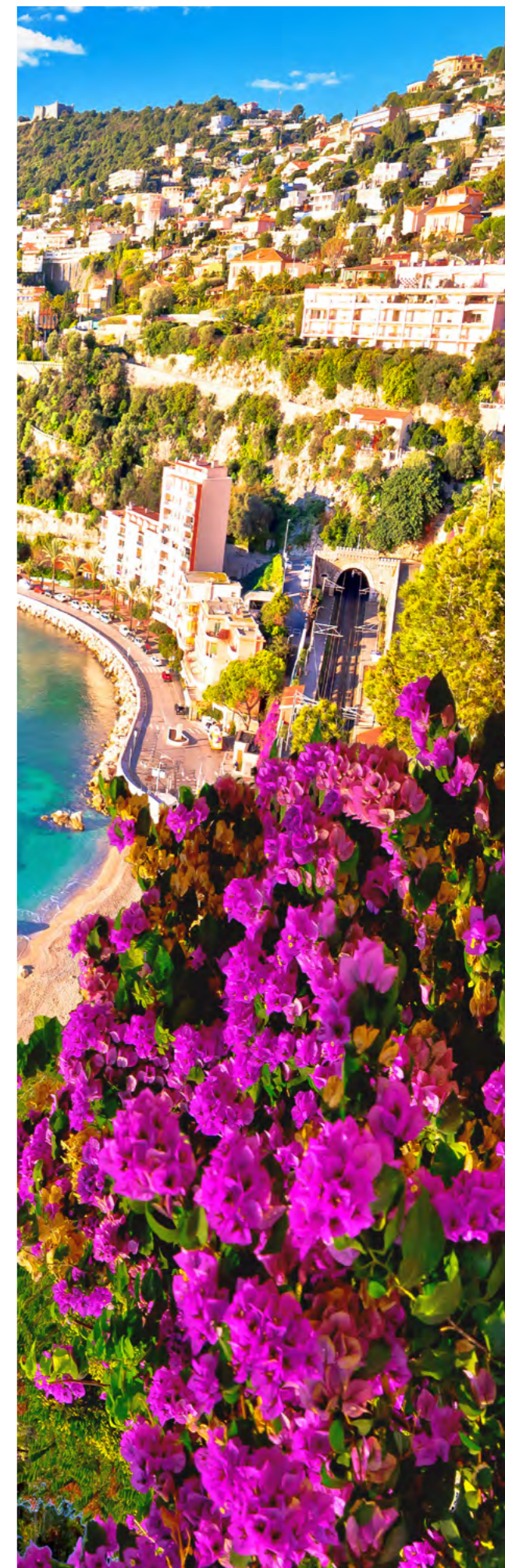
- You must attend all classes. If you do not attend your classes your representative will be informed. If you do not then improve your attendance you will be sent home. 85% attendance is needed to be able to receive a certificate of completion.
- Be on time for all your lessons.
- Always inform English Path if you are going to be absent from school for any reason and tell your host family if you are going away overnight.
- If you commit a criminal offence or have to be severely disciplined you will be sent home. We will also inform the immigration authorities.
- Be respectful, polite and open to different cultures.



Living costs

(sample prices for items in this city)

- Bottle of water: 0,70€
- Coffee: 2,70€
- Can of coke: 2€
- Meal out for two: 40€
- Takeaway pizza: 18€
- Sandwich: 5€
- Local bus ticket: 2,15€
- Local subway ticket: 2,15€
- Bike rental: 20 to 40€/month
- Cinema ticket: 13.50€





Paris Airport Transport

Paris International Airport

CLOSEST AIRPORT: Roissy Charles de Gaulle / Orly

Mode	Line or number	Cost	Duration (to the centre)
Orly Airport to city centre by bus:	OrlyBus	11,20 €	30 minutes
Roissy Airport to city centre by train:	RER B	13,00 €	30 minutes

- If you choose to book an airport transfer your flight details should be sent to us 4 weeks in advance to reassure we will be able to provide you an airport transfer.
- A driver will meet you after you come through the customs area and drive you to your accommodation.

 [@englishpathschoools](https://www.instagram.com/englishpathschoools)

 [englishpath.com](https://www.englishpath.com)

