

Accommodation

Accommodation is a vital part of your experience in a new country. Your new home is an important part of your study experience. Each school has specially chosen options to help make the most out of your stay. Homestay and student residences offer different accommodation experiences, but always meet the highest standards.

All accommodation options are based on availability. Please make sure you check with your representative if we have availability.

What accommodation option should I choose?

The choice of accommodation depends on your preferences, needs, and budget. Below are some important factors you need to consider.

Student residence 16+

- Convenient location, typically close to campus.
- Easy access to good facilities and nearby amenities.



- Noise levels might be high.
- Might be sharing facilities with other students.
- Might be expensive.



Hotel 18+

- Full services (housekeeping, room service)
- Flexibility (no long-term commitment)
- Affordable option.

- Little privacy; Sharing room with others.
- Impersonal, limited customization.

Shared apartments 18+

- Meet other students from all over the world.
- Easier to socialise.
- Can be more affordable.

- May have to deal with shared chores and responsibilities.
- You might not be able to choose your flatmates.

Booking student accommodation in 3 simple steps

Step 1

You can indicate your preferred type of accommodation (homestay, shared apartment or residence) on the application form during your application for a course. Our Student Services team will record the preferred choice of accommodation.

Step 2

EP will be able to secure the accommodation option once the invoice has been paid. Our team will send you the accommodation confirmation with further details on the selected option.

Step 3

You will need to confirm your arrival and send your flight details to our team, as soon as the flight is booked and no later than one week before the flight date. Our team will be able to book and confirm your accommodation and/ or transfers and provide more details within the confirmation document.

If you arrive at a residence or homestay between 22.00–08.00 you may be asked to book alternative accommodation in a hotel on the first night due to late/early arrival at the accommodation.

Student Residence (Campus Hub)

Finding ways to relax when on campus plays a big part in any student's life, so whether it's a hot cup of coffee, a whopping burger or some well needed retail therapy that chills you out, Campus Hub has it all.

- Twin and Single bedrooms
- Spacious, fully equipped
- Laundry facility on site
- Communal Kitchen with Cable TV & utilities
- Wi-Fi
- Cleaning one time per week
- Gym (extra charge applies)
- Outdoor swimming Pool
- Student Lounge
- Food & Retail Outlets

Address: University of Malta Tal-Qroqq L-Imsida
Distance to school: 9 minutes by public transport

About the residence

Accommodation types:

Single room with private bathroom.
Twin room with private bathroom.

Bedrooms: The bedroom contains the following: bed, pillow, bedding, chair, desk, window, closet.

Bed size: Single bed.

Bathroom: Private bathroom.

Kitchen: The kitchen in the unit contains the following: fridge, freezer, cooker, oven, cutlery, plates, pans, microwave.

Facilities: Spacious lobby, study room and on-site laundry, WIFI.

Facilities at extra cost: On-site laundry.

Cleaning service: Light cleaning service once a week. It is also the students' responsibility to maintain cleanliness in the kitchen by washing their dishes, pans and silverware after cooking.

Linens/towels: Clean, fresh linens and sheets upon arrival and changed once a week.

Other charges: Eco Tax (€5) + other fees payable at check-in

Neighbourhood: Msida is a harbour town situated very near the capital Valletta on the northeast coast of Malta. As its Arabic-derived name implies, it knows its origins as a fishing village although today it is mostly associated with the University of Malta, the GF Abela Junior College and the Mater Dei General Hospital. However, Msida still operates a very active and attractive Yacht Marina in its very sheltered inlet of Marsamxett Harbour.

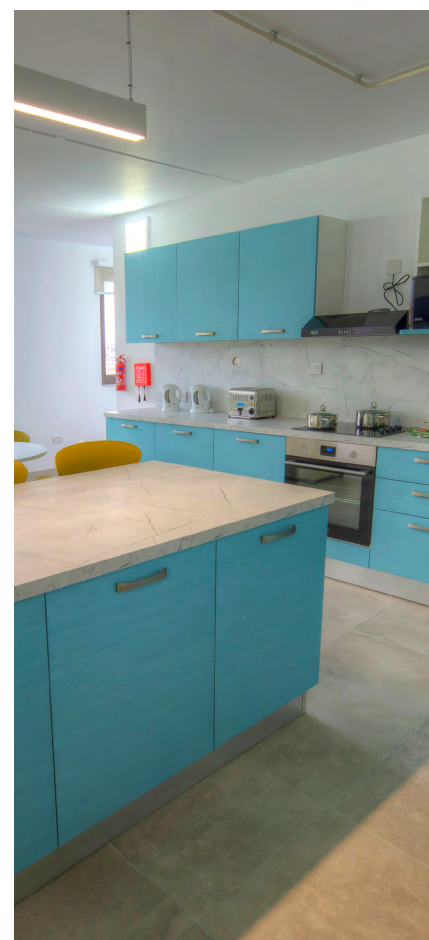
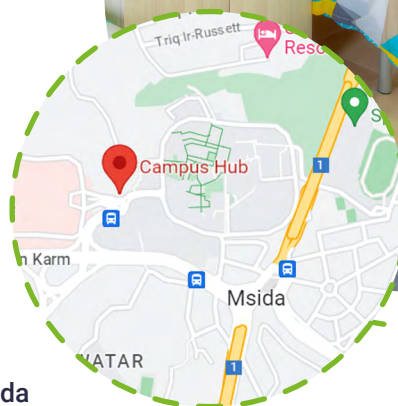
Visitors/guests: Visitors are only allowed in the common areas & must leave by 9pm. No overnight visitors. Penalty fine for visitors in unit after 9 or overnight.

Noise: Residents must respect all other residents and maintain a noise level that does not disturb others. Quiet hours are from 10pm-8am.

Smoking: Smoking is prohibited in all facilities and in residents' rooms.

Reception/security: Campus reception is available 24/7.

1 week = 7 nights: Saturday to Saturday or Sunday to Sunday, depending on availability.

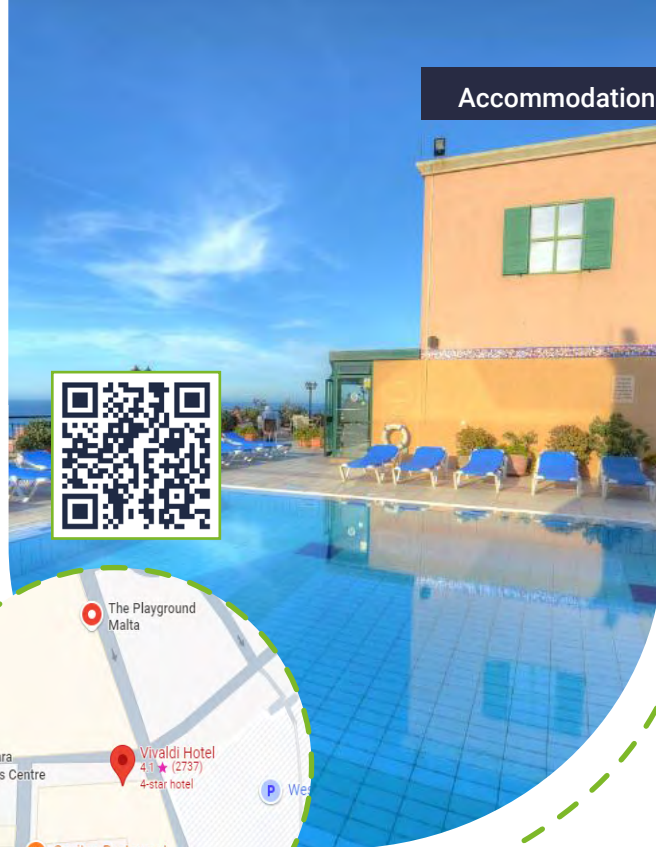


Vivaldi Hotel

The Vivaldi Hotel in Malta is a modern four-star hotel in the heart of St. Julian's, known for its lively nightlife and close proximity to the beach. It offers contemporary rooms, many with sea views, and is within walking distance of key attractions like Spinola Bay.

- Air-conditioning
- Balcony
- TV
- Free Wi-Fi
- Paid public parking on-site
- Fitness Centre with Gym / Workout Room
- Restaurant, bar, lounge
- Games room
- Accessibility features
- Pools

Address: Dragonara Road, Saint Julian's, STJ 06, Malta
Distance to school: 5 minutes walk



About the residence

Accommodation types:

Private bedroom with en-suite bathroom. (Please consult us for up-to-date pricing).

Bedrooms: The bedroom contains the following: bed, pillow, bedding, chair, desk, window, closet, tea/coffee maker, mini fridge, TV, hairdryer, and air conditioning.

Bed size: Single beds.

Bathroom: En suite with shower or bath.

Kitchen: The room is equipped with a kettle and tea/coffee-making facilities as well as a mini fridge.

Facilities: Newtons Leisure Club with an indoor swimming pool, sauna, hot tub, and gym. Laundry facilities, multiple pools, bar/lounge area as well as a games room.

Additional costs: Breakfast is optional and is served from 7-10 am throughout the week and dinner from 6.30-10 pm. Spa services cost depending on the service purchased.

Neighbourhood: The hotel is in the Paceville district, Malta's main entertainment area. It is 300 meters from the Dragonara Casino and 400 meters from St Julian's bus terminal. Valletta is a 15-minute drive away, and Malta International Airport is 20 minutes away by car.

Visitors/guests: Visitors, including overnight guests, are not allowed.

Noise: Residents are required to respect all other residents and maintain a level of noise that does not disturb others. Quiet hours are 10 pm - 8 am.

Smoking: All facilities and residents' rooms are non-smoking.

Reception/security desk: 24-hour security and reception.

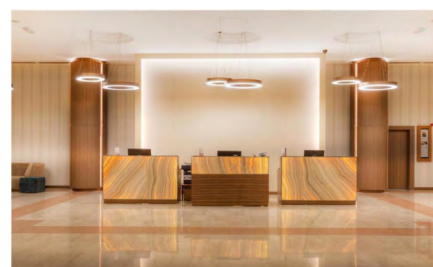
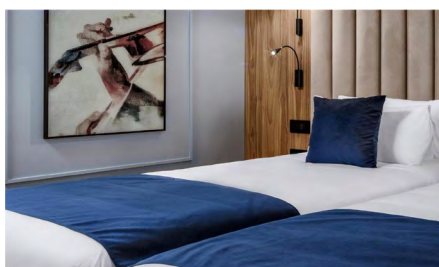
Cleaning service: Rooms are cleaned daily unless otherwise requested.

Bed linen/towels: Fresh clean linens and bedding are provided daily, and towels are provided and changed daily.

Minimum weeks requests: 1-night minimum stay.

Check-in/check-out: Check-in from 3 pm / Check-out at 11 am.

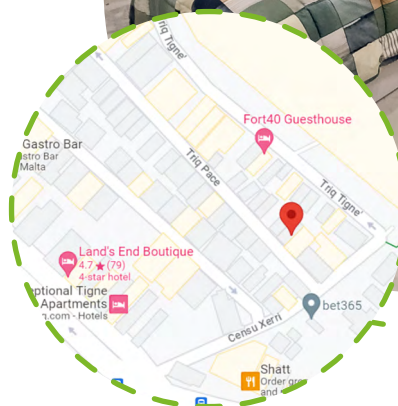
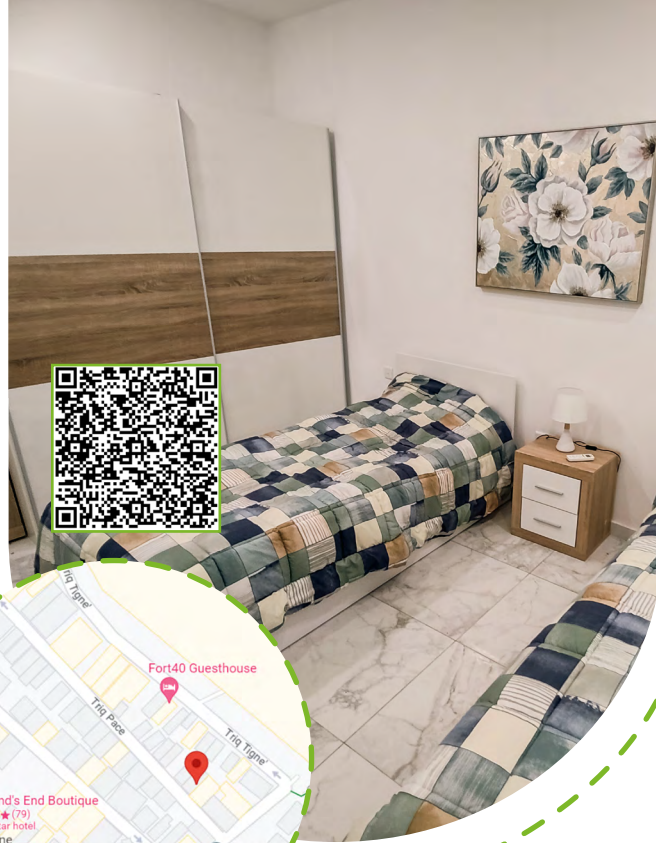
Location of the accommodation: Less than 1 mile away from four different beaches; Exiles, St George's, Balluta and Fond Ghadir. Within walking distance of multiple restaurants.



Shared Apartments

- Our apartments are located in Sliema, a coastal town situated on the northeast of Malta, adjacent to St. Julian's.
- Shared bedrooms
- Balcony
- Wi-Fi
- Cleaning included once a week
- Walking distance to restaurants, shopping centre, and more
- Shared kitchen
- Shared Bathroom
- 20 minutes from Valletta (capital city)
- Walking distance to public transport

Address: 68 Triq Pace, Tas-Sliema
Distance to school: 10 minutes by public



About the shared apartments

Accommodation types:

The bedroom contains the following: bed, pillow, bed linen, chair, desk, window, wardrobe, safe and hangers.

Bed size: Single beds.

Bathroom: Shared bathroom = 4 students maximum sharing.

Kitchen: The kitchen in the unit contains the following: fridge, freezer, cooker, oven, frying pans, microwave, mixer, coffee maker and cutlery.

Facilities: - Wi-Fi, fitted kitchen, fridge, washing machine.

Neighbourhood: Sliema is a coastal town situated on the northeast of Malta, adjacent to St. Julians. Once the home of Malta's aristocracy, it has now become a major commercial area, very popular for shopping, bars, cafes, restaurants and hotels.

Visitors/guests: Our apartments are for the use of our students only.

Noise: Residents must respect other residents and maintain a noise level that does not disturb others. No loud music or noise is allowed after 11pm.

Smoking: Smoking is strictly prohibited.

Reception/security desk: There is no reception or security desk.

Cleaning service: A cleaning service is available once a week. Students are responsible for keeping their rooms clean. Bed linen change is not included. It is also the students' responsibility to maintain cleanliness in the kitchen by washing their dishes, pans and cutlery after cooking.

Bed linen/towels: Clean and fresh bed linen and sheets on arrival. Students are responsible for cleaning up after check-in. Towels are not provided.

Minimum weeks requests: Minimum stay of 2 weeks. Sunday to Sunday booking.

Check-in/check-out: Check-in between 14:00 and 21:00/
Check-out at 10:00.

Location of the accommodation: 20-30 min by public transport from the city centre.

